

Product datasheet for **TA386325**

Pdcd1 Rabbit Monoclonal Antibody [Clone ID: J43]

Product data:

Product Type:	Primary Antibodies
Clone Name:	J43
Applications:	ELISA, FC, IHC, IP, Neutralize
Reactivity:	Mouse
Host:	Rabbit
Clonality:	Monoclonal
Immunogen:	This antibody was raised by immunising Armenian hamsters with B12 cells, a PD-1 cDNA transfectant of BHK cells.
Specificity:	This antibody is specific for murine PD-1.

The specificity of this antibody has been confirmed in ELISA analysis, using PD-1 extracellular domain fusion proteins (Agata et al, 1996). Additionally, in flow cytometric analysis, this antibody reacts with PD-1 cDNA-transfected BHK and CHO cells, but not with parental BHK and CHO cells, as well as reacting with lymphocytes from PD-1 cDNA transgenic mice (Agata et al, 1996). This antibody has been used to immunoprecipitate PD-1 from lysates of PD-1 cDNA-transfected BHK and CHO cells (Agata et al, 1996), in flow cytometric quantification of CD4+PD-1+ T cells in murine spleens (Kasagi et al, 2010), and in immunohistochemical analysis of acetone-fixed murine spinal cord and brain tissue sections (Salama et al, 2003). This antibody displays diverse effects in different mouse models of disease. When administered to NZB/W F1 mice, a model of lupus-like nephritis, this antibody has been shown to delay the onset of nephritis and prolong survival, through the depletion of PD-1+ T cells (Kasagi et al, 2010). Antibody-treated NZB/W F1 mice displayed decreased numbers of PD-1+ T cells, and this antibody was confirmed to trigger complement-dependent cytotoxicity in PD-1+ T cells in vitro (Kasagi et al, 2010). Conversely, administration to experimental allergic encephalitis (EAE) and NOD diabetes mice exacerbated disease, through its neutralising activity (Salama et al, 2003; Ansari et al, 2003); this antibody has been shown in vitro to inhibit binding of both PD-L1-Ig and PD-L2-Ig to PD-1 transfected BHK cells (Ansari et al, 2003).

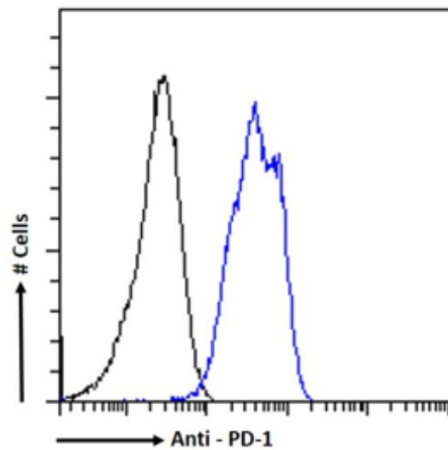
Formulation:	PBS with 0.02% Proclin 300.
Concentration:	lot specific



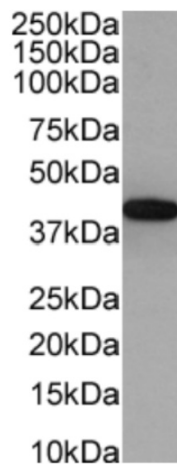
[View online »](#)

Conjugation:	Unconjugated
Storage:	Please store at 4°C for up to 3 months. For longer storage, aliquot and store at -20°C. Avoid freeze and thaw cycles.
Stability:	3 years from dispatch.
Gene Name:	programmed cell death 1
Database Link:	Entrez Gene 18566 Mouse Q02242
Synonyms:	CD279; hPD-1; hPD-I; PD1; SLEB2
Note:	This chimeric rabbit antibody was made using the variable domain sequences of the original Hamster IgG format, for improved compatibility with existing reagents, assays and techniques.

Product images:



Flow cytometry using the Anti-PD-1 antibody J43 (TA386325). Paraformaldehyde fixed mouse splenocytes permeabilized with 0.5% Triton were stained with anti-unknown specificity antibody ([TA385792]; isotype control, black line) or the rabbit IgG version of J43 (TA386325, blue line) at a dilution of 1:100 for 1h at RT. After washing, the bound antibody was detected using a goat anti-rabbit IgG AlexaFluor® 488 antibody at a dilution of 1:1000 and cells analyzed using a FACSCanto flow-cytometer.



Western Blot using Anti-PD-1 antibody J43 (TA386325). Mouse lymph node tissue lysate (35µg protein in RIPA buffer) were resolved on a SDS PAGE gel and blots were probed with the chimeric rabbit version of J43 (TA386325) at 0.003µg/ml before detection using an anti-rabbit secondary antibody. A primary incubation of 1h was used and protein was detected by chemiluminescence.