

Product datasheet for **TA386265**

CD18 (ITGB2) Rabbit Monoclonal Antibody [Clone ID: 1B4]

Product data:

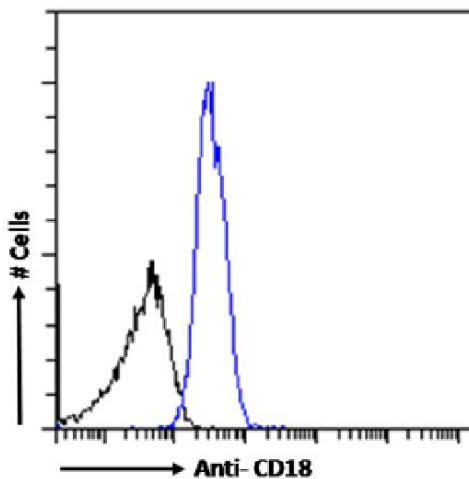
Product Type:	Primary Antibodies
Clone Name:	1B4
Applications:	ELISA, FC, IF, IP, R
Reactivity:	Human, Monkey
Host:	Rabbit
Isotype:	IgG, kappa
Clonality:	Monoclonal
Immunogen:	Blood was obtained from 4 healthy donors and the mononuclear cells harvested and grown. A BALB/c mouse was injected with 10^6 monocytes three times at monthly intervals, and four times with 5×10^6 monocytes on each of the four days before fusion. The spleen cells were then fused to P3U1 myeloma cells to generate hybridomas and RIA was used to identify lines of interest.
Specificity:	<p>Specific to the beta chain of the leukocyte integrin beta-2 family. This is found in LFA-1, Mac-1 and p150.95 among others. Binds an epitope distinct from the C3bi binding site. Has been shown to recognise both the human and Rhesus monkey antigen.</p> <p>The main application 1B4 has been proposed for is its anti-inflammatory activity. It has been shown to work as a Fab fragment prepared by papain digestion (Wright et al, 1983). Its binding to antigen was confirmed by RIA (Van Voorhis et al, 1983). 1B4 has been shown to work in Rhesus monkeys, and has reduced immunogenicity once humanized. 1B4 is also compatible with immunofluorescence which has been used to demonstrate that the fine specificity of the combining sites was not altered by humanization (Singer et al, 1993). It has been shown to prevent polymorphonuclear (PMN)-dependent pathology in animal models of hemorrhagic shock, dermal inflammation, reperfusion injury, IBD and meningitis (Vedder et al, 1988, Vedder et al, 1990, Mileski et al, 1990, Carlos et al, 1990, Tuomanen et al, 1989, Arfors et al, 1987, Wallace et al, 1991, Wallace et al, 1992). The glycosylation patterns of 1B4 have also been studied in detail using NMR, ES-MS, HPAEC-PAD mapping and glycosyl composition analysis (Yu Ip et al, 1994).</p>
Formulation:	PBS with 0.02% Proclin 300.
Concentration:	lot specific



[View online >](#)

Conjugation:	Unconjugated
Storage:	Please store at 4°C for up to 3 months. For longer storage, aliquot and store at -20°C. Avoid freeze and thaw cycles.
Stability:	3 years from dispatch.
Gene Name:	integrin subunit beta 2
Database Link:	Entrez Gene 3689 Human P05107
Synonyms:	CD18; LAD; LCAMB; LFA-1; MAC-1; MF17; MFI7; OTTHUMP00000115279; OTTHUMP00000115281; OTTHUMP00000115282
Note:	This chimeric rabbit antibody was made using the variable domain sequences of the original Mouse IgG2a format, for improved compatibility with existing reagents, assays and techniques.

Product images:



Flow-cytometry using the anti-CD18 antibody 1B4 (TA386265). Human peripheral blood leukocytes were stained with anti-Fluorescein IgG antibody (clone 4-4-20; isotype control, black line) or the rabbit IgG1 version of 1B4 (TA386265, blue line) at a dilution of 1:100 for 1h at RT. After washing, bound antibody was detected using a goat anti-mouse IgG AlexaFluor® 488 antibody at a dilution of 1:1000 and cells analyzed using a FACSCanto flow-cytometer.