

Product datasheet for **TA386169**

CD3E Rabbit Monoclonal Antibody [Clone ID: 898H2-6-15]

Product data:

Product Type:	Primary Antibodies
Clone Name:	898H2-6-15
Applications:	FC, IHC
Reactivity:	Pig
Host:	Rabbit
Isotype:	IgG, kappa
Clonality:	Monoclonal
Immunogen:	Murine antibodies were produced by immunising C3H/HeJ mice with swine peripheral blood lymphocytes. Hybridomas were generated by obtaining splenocytes from the immunised mice and fusing these with the non-Ig-producing myeloma cell line P3X63Ag8.653 via established methods.
Specificity:	<p>Hybridoma 898H2-6-15 was shown via double-colour flow cytometry analysis to bind swine lymphocyte populations specifically. It was further shown using FACS that purified 898H2-6-15 bound an epitope on CD3e shared by another anti-pig CD3 Ab (STH164). CD3, and the e chain in particular, is crucial for T cell receptor-dependent signal transduction across the lymphocyte membrane.</p> <p>The initial identification of 898H2-6-15 showed that it recognised the T-cell receptor-associated glycoprotein CD3, in particular the e chain (Huang et al, 1999). More recently, the 898H2-6-15 VH and VL domains were reformatted into a scFv and conjugated to diphtheria toxin (Wang et al, 2011). This version of the antibody as an 'immunotoxin' has been shown to deplete circulating T cells in swine without observation of any clinical toxicities.</p>
Formulation:	PBS with 0.02% Proclin 300.
Concentration:	lot specific
Conjugation:	Unconjugated
Storage:	Please store at 4°C for up to 3 months. For longer storage, aliquot and store at -20°C. Avoid freeze and thaw cycles.
Stability:	3 years from dispatch.

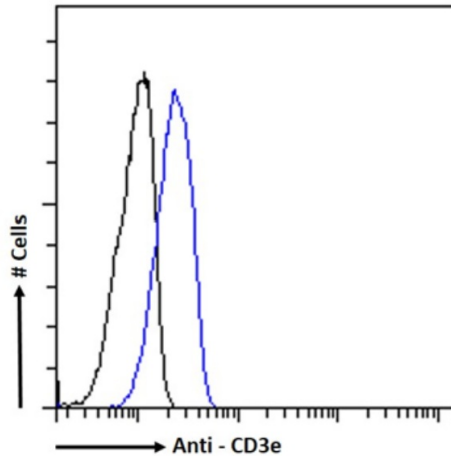

[View online »](#)

Database Link: [Entrez Gene 397455 Pig Q7YRN2](#)

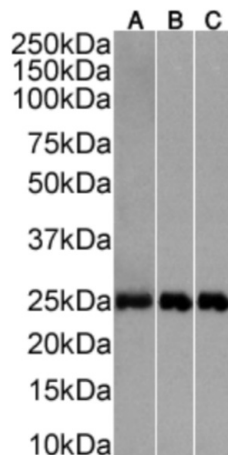
Synonyms: CD3-epsilon; FLJ18683; T3E; TCRE

Note: This chimeric rabbit antibody was made using the variable domain sequences of the original Mouse IgG2a format, for improved compatibility with existing reagents, assays and techniques.

Product images:



Flow cytometry using the Anti-CD3e antibody 898H2-6-15 (TA386169). Paraformaldehyde fixed pig peripheral blood monocytes permeabilized with 0.5% Triton were stained with anti-unknown specificity antibody ([TA385792]; isotype control, black line) or the rabbit IgG version of 898H2-6-15 (TA386169, blue line) at a dilution of 1:100 for 1h at RT. After washing, the bound antibody was detected using a goat anti-rabbit IgG AlexaFluor® 488 antibody at a dilution of 1:1000 and cells analyzed using a FACSCanto flow-cytometer.



Western Blot using Anti-CD3e antibody 898H2-6-15 (TA386169). Pig spleen(A) (1µg/ml), pig thymus(B) (0.1µg/ml) and lymph node(C) (0.1µg/ml) tissue lysate (35µg protein in RIPA buffer) were resolved on a SDS PAGE gel and blots were probed with the chimeric rabbit version of 898H2-6-15 (TA386169) before detection using an anti-rabbit secondary antibody. A primary incubation of 1h was used and protein was detected by chemiluminescence.