

Product datasheet for **TA386042**

CD3E Rabbit Monoclonal Antibody [Clone ID: 12F6]

Product data:

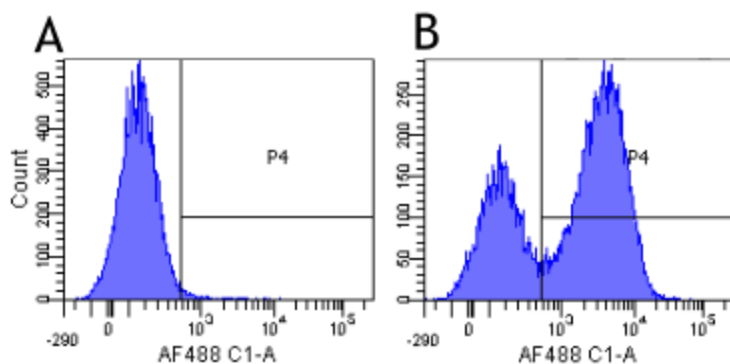
Product Type:	Primary Antibodies
Clone Name:	12F6
Applications:	FC
Reactivity:	Human
Host:	Rabbit
Isotype:	IgG, kappa
Clonality:	Monoclonal
Immunogen:	Human CD3
Specificity:	This antibody binds to human CD3.

This antibody competes for CD3 binding with the therapeutic antibody OKT3 (Ab00122). 12F6 binding to CD3 on human T-cells stimulates the secretion of TNF-alpha, INF-gamma and IL-10. Humanized versions of this antibody are also available.

Formulation:	PBS with 0.02% Proclin 300.
Concentration:	lot specific
Conjugation:	Unconjugated
Storage:	Please store at 4°C for up to 3 months. For longer storage, aliquot and store at -20°C. Avoid freeze and thaw cycles.
Stability:	3 years from dispatch.
Gene Name:	CD3e molecule
Database Link:	Entrez Gene 916 Human P07766
Synonyms:	CD3-epsilon; FLJ18683; T3E; TCRE
Note:	This chimeric rabbit antibody was made using the variable domain sequences of the original Mouse IgG2a format, for improved compatibility with existing reagents, assays and techniques.



[View online »](#)

Product images:

Flow-cytometry using anti-CD3 antibody 12F6 (TA386042) Human lymphocytes were stained with an isotype control ([TA385644], panel A) or the rabbit-chimeric version of 12F6 (TA386042, panel B) at a concentration of 1 $\mu\text{g}/\text{ml}$ for 30 mins at RT. After washing, bound antibody was detected using a AF488 conjugated donkey anti-rabbit antibody and cells analysed on a FACSCanto flow-cytometer.