

Product datasheet for **TA385926**

PD-L1 (Cd274) Rabbit Monoclonal Antibody [Clone ID: YDC 127.1.1]

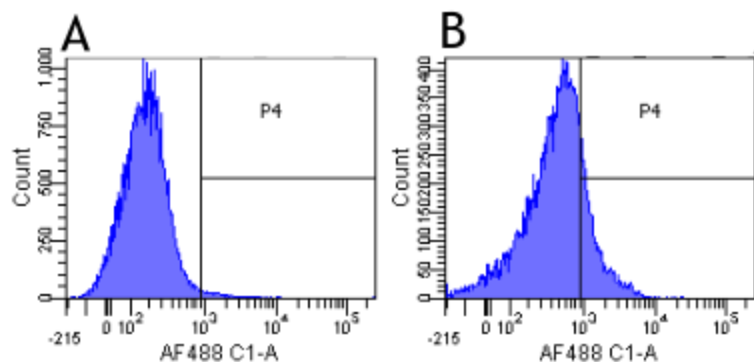
Product data:

Product Type:	Primary Antibodies
Clone Name:	YDC 127.1.1
Applications:	FC
Reactivity:	Mouse
Host:	Rabbit
Isotype:	IgG, kappa
Clonality:	Monoclonal
Immunogen:	Murine PDL1.
Specificity:	This antibody binds to murine PDL1. This antibody binds to murine PDL1.
Formulation:	PBS with 0.02% Proclin 300.
Concentration:	lot specific
Conjugation:	Unconjugated
Storage:	Please store at 4°C for up to 3 months. For longer storage, aliquot and store at -20°C. Avoid freeze and thaw cycles.
Stability:	3 years from dispatch.
Gene Name:	CD274 antigen
Database Link:	Entrez Gene 60533 Mouse Q9EP73
Synonyms:	B7-H; B7-H1; B7H1; MGC142294; MGC142296; PD-L1; PDCD1L1; PDCD1LG1; PDL1
Note:	This chimeric rabbit antibody was made using the variable domain sequences of the original Rat IgG2a format, for improved compatibility with existing reagents, assays and techniques.

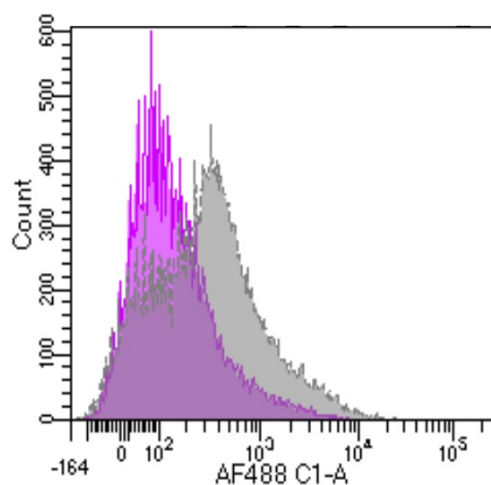


[View online »](#)

Product images:



Flow-cytometry using anti-PDL1 antibody YDC 127.1.1 (TA385926) Mouse lymphocytes were stained with an isotype control ([TA385644], panel A) or the rabbit-chimeric version of YDC 127.1.1 (TA385926, panel B) at a concentration of 1 $\mu\text{g}/\text{ml}$ for 30 mins at RT. After washing, bound antibody was detected using a AF488 conjugated donkey anti-rabbit antibody and cells analysed on a FACSCanto flow-cytometer.



Flow-cytometry using anti-PD-L1 antibody YDC 127.1.1 (TA385926) Mouse spleenocytes were stained with an isotype control ([TA385644], purple) or the rabbit-chimeric version of YDC 127.1.1 (TA385926, grey) at a concentration of 1 $\mu\text{g}/\text{ml}$ for 30 mins at RT. After washing, bound antibody was detected using a AF488 conjugated donkey anti-rabbit antibody and cells analysed on a FACSCanto flow-cytometer.