

Product datasheet for **TA385806**

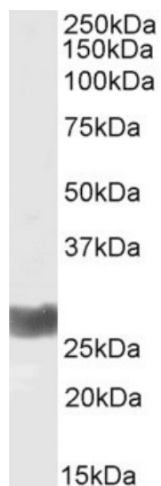
Interferon gamma (IFNG) Rabbit Monoclonal Antibody [Clone ID: D9D10]

Product data:

Product Type:	Primary Antibodies
Clone Name:	D9D10
Applications:	BI, ELISA, FC, WB
Reactivity:	Human
Host:	Rabbit
Isotype:	IgG, kappa
Clonality:	Monoclonal
Immunogen:	FPLC-purified natural human IFN- γ . Refer to the original article [PMID: 3114127]
Specificity:	Binds human interferon gamma, a dimerized soluble cytokine that is the only member of the type II class of interferons. This antibody can be used to detect both native and recombinant interferon gamma (IFN γ). It is reported only to bind to the functional, dimeric form of IFN γ .
Formulation:	PBS with 0.02% Proclin 300.
Concentration:	lot specific
Conjugation:	Unconjugated
Storage:	Please store at 4°C for up to 3 months. For longer storage, aliquot and store at -20°C. Avoid freeze and thaw cycles.
Stability:	3 years from dispatch.
Gene Name:	interferon, gamma
Database Link:	Entrez Gene 3458 Human P01579
Synonyms:	IFG; IFI; IFN-gamma
Note:	This chimeric rabbit antibody was made using the variable domain sequences of the original murine IgG1 format, for improved compatibility with existing reagents, assays and techniques.



[View online »](#)

Product images:

Western Blot using anti-IFN gamma antibody D9D10 (TA385806) Human thymus lysate (35 μ g protein in RIPA buffer) was resolved on a 15% SDS PAGE gel and blots probed with the rabbit IgG-chimeric version of D9D10 (TA385806) at 0.1 μ g/ml before detection using an anti-rabbit secondary antibody. Protein was detected by chemiluminescence. The expected unmodified running size for IFN gamma is 19.3kDa, though the form shown here is likely glycosylated. TA385806 successfully detected IFN gamma in human thymus samples.