

## Product datasheet for **TA385760**

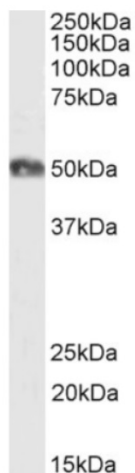
### CD2 Rabbit Monoclonal Antibody [Clone ID: YTH 655]

#### Product data:

Product Type:	Primary Antibodies
Clone Name:	YTH 655
Applications:	FC
Reactivity:	Human
Host:	Rabbit
Isotype:	IgG, kappa
Clonality:	Monoclonal
Specificity:	This antibody specifically recognizes human CD2, a cell adhesion molecule found on the surface of T cells and natural killer (NK) cells.
Formulation:	PBS with 0.02% Proclin 300.
Concentration:	lot specific
Conjugation:	Unconjugated
Storage:	Please store at 4°C for up to 3 months. For longer storage, aliquot and store at -20°C. Avoid freeze and thaw cycles.
Stability:	3 years from dispatch.
Gene Name:	CD2 molecule
Database Link:	<a href="#">Entrez Gene 914 Human P06729</a>
Synonyms:	FLJ46032; LFA-2; SRBC; T11
Note:	This chimeric rabbit antibody was made using the variable domain sequences of the original Rat IgG2b format, for improved compatibility with existing reagents, assays and techniques.



[View online »](#)

**Product images:**

Western Blot using anti-CD2 antibody YTH 655 (TA385760). Human tonsil lysate samples (35 $\mu$ g protein in RIPA buffer) were resolved on a 10% SDS PAGE gel and blots probed with the chimeric rabbit version of YTH 655 (TA385760) at 1  $\mu$ g/ml before detection using an anti-rabbit secondary antibody. A primary incubation of 1h was used and protein was detected by chemiluminescence. The expected running size for unmodified CD2 is 39.5kDa, but this protein is glycosylated at several residues. TA385760 successfully detected CD2 in human tonsil lysate.