

## Product datasheet for **TA385306**

### SP1 Rabbit Polyclonal Antibody

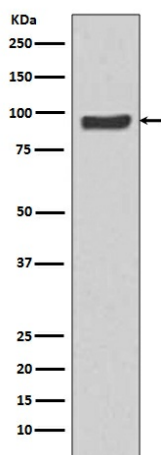
#### Product data:

Product Type:	Primary Antibodies
Applications:	IF, IHC, WB
Recommended Dilution:	WB: 1/500-1/2000 IHC: 1/50-1/200 ICC/IF: 1/50-1/200
Reactivity:	Human
Host:	Rabbit
Isotype:	IgG
Clonality:	Polyclonal
Immunogen:	A synthesized peptide derived from human SP1
Formulation:	Rabbit IgG in phosphate buffered saline , pH 7.4, 150mM NaCl, 0.02% sodium azide and 50% glycerol.
Concentration:	lot specific
Purification:	Affinity Chromatography
Conjugation:	Unconjugated
Storage:	Store at 4°C short term. Aliquot and store at -20°C long term. Avoid freeze/thaw cycles.
Stability:	1 year
Predicted Protein Size:	90kDa
Gene Name:	Sp1 transcription factor
Database Link:	<a href="#">Entrez Gene 6667 Human P08047</a>
Background:	Swiss-Prot Acc.P08047.SP1 is a transcription factor of the Sp1 C2H2-type zinc-finger protein family. Phosphorylated and activated by MAPK. Dephosphorylation by PTEN inhibits DNA binding. Binds to p38 in the nucleus.
Synonyms:	TSFP1



[View online »](#)

## Product images:



Western blot analysis of SP1 in HeLa lysates using SP1 antibody.