

Product datasheet for **TA385300**

Superoxide Dismutase 1 (SOD1) Rabbit Polyclonal Antibody

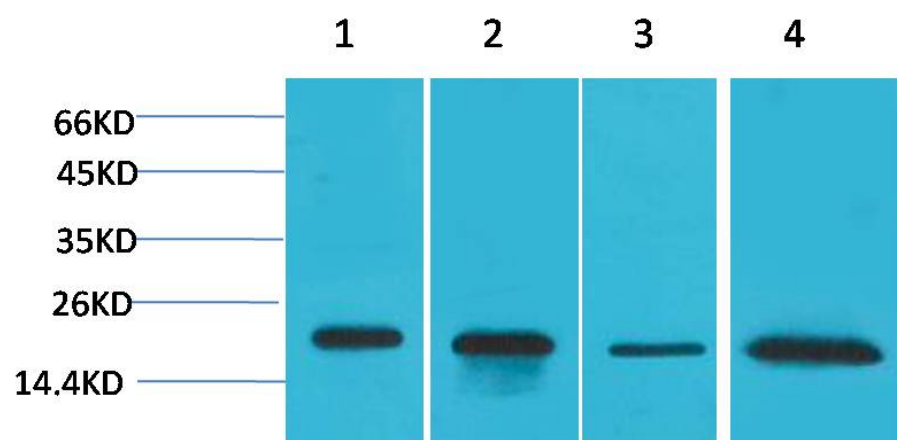
Product data:

| | |
|-------------------------|--|
| Product Type: | Primary Antibodies |
| Applications: | IHC, WB |
| Recommended Dilution: | WB: 1/500-1/2000 IHC-p: 1/50-300 |
| Reactivity: | Human, Mouse, Rat |
| Host: | Rabbit |
| Isotype: | IgG |
| Clonality: | Polyclonal |
| Immunogen: | Synthesized peptide derived from the Internal region of human SOD-1. |
| Formulation: | Liquid in PBS containing 50% glycerol, 0.5% BSA and 0.02% sodium azide, pH 7.3. |
| Concentration: | lot specific |
| Purification: | Affinity Purified |
| Conjugation: | Unconjugated |
| Storage: | Store at 4°C short term. Aliquot and store at -20°C long term. Avoid freeze/thaw cycles. |
| Stability: | 1 year |
| Predicted Protein Size: | Observed MW (kDa):18 |
| Gene Name: | superoxide dismutase 1, soluble |
| Database Link: | Entrez Gene 6647 Human P00441 |
| Background: | Swiss-Prot Acc.P00441. |
| Synonyms: | ALS1; homodimer; IPOA; SOD |



[View online »](#)

Product images:



Western blot analysis of Superoxide Dismutase 1 in Hela, MCF-7, mouse Brain, rat Brain lysates using SOD1 antibody.