

Product datasheet for **TA385243**

SIRT1 Rabbit Polyclonal Antibody

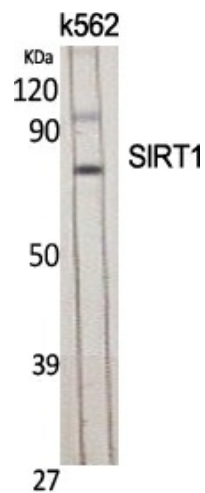
Product data:

Product Type:	Primary Antibodies
Applications:	ELISA, IF, IHC, WB
Recommended Dilution:	IF: 1/50-200 WB: 1/500-1/2000 IHC: 1/100-1/300 ELISA: 1/5000
Reactivity:	Human, Mouse
Host:	Rabbit
Isotype:	IgG
Clonality:	Polyclonal
Immunogen:	The antiserum was produced against synthesized peptide derived from human SirT1. AA range:13-62
Formulation:	Liquid in PBS containing 50% glycerol, 0.5% BSA and 0.02% sodium azide, pH 7.3.
Concentration:	lot specific
Purification:	Affinity Purified
Conjugation:	Unconjugated
Storage:	Store at 4°C short term. Aliquot and store at -20°C long term. Avoid freeze/thaw cycles.
Stability:	1 year
Predicted Protein Size:	Observed MW (kDa):81
Gene Name:	sirtuin 1
Database Link:	Entrez Gene 23411 Human Q96EB6
Background:	Swiss-Prot Acc.Q96EB6.
Synonyms:	hSIR2; hSIRT1; SIR2alpha; SIR2L1



[View online »](#)

Product images:



Western blot analysis of SIRT1 in various lysates using SIRT1 antibody.