

## Product datasheet for **TA385186**

### **MSK1 (RPS6KA5) Rabbit Polyclonal Antibody**

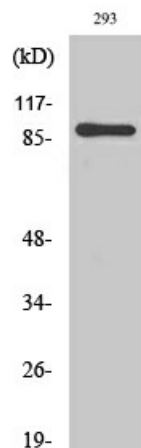
#### **Product data:**

Product Type:	Primary Antibodies
Applications:	IF, IHC, WB
Recommended Dilution:	WB: 1/500-1/2000 IHC-P: 1/100-1/300 ICC/IF: 1/200-1/1000
Reactivity:	Human, Mouse
Host:	Rabbit
Isotype:	IgG
Clonality:	Polyclonal
Immunogen:	Synthesized peptide derived from human MSK1 around the non-phosphorylation site of T581.
Formulation:	Liquid in PBS containing 50% glycerol, 0.5% BSA and 0.02% sodium azide, pH 7.3.
Concentration:	lot specific
Purification:	Affinity Purified
Conjugation:	Unconjugated
Storage:	Store at 4°C short term. Aliquot and store at -20°C long term. Avoid freeze/thaw cycles.
Stability:	1 year
Predicted Protein Size:	90 kDa
Gene Name:	ribosomal protein S6 kinase A5
Database Link:	<a href="#">Entrez Gene 9252 Human O75582</a>
Synonyms:	MGC1911; MSK1; MSPK1; RLPK; RSKL

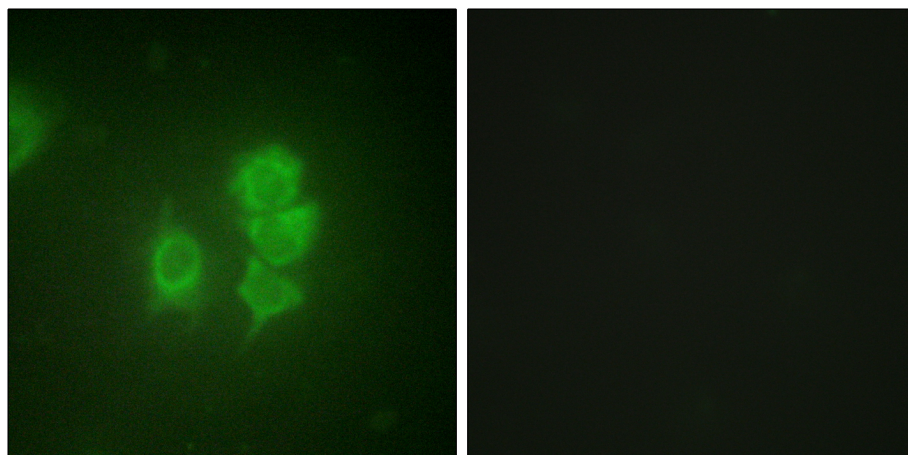


[View online »](#)

## Product images:



Western blot analysis of MSK1 in 293 lysates using MSK1 antibody.



Immunofluorescence analysis of MSK1 in HUVEC using MSK1 antibody. The picture on the right is blocked using the synthesized peptide.