

Product datasheet for **TA384993**

Phospholipase C gamma 1 (PLCG1) Rabbit Polyclonal Antibody

Product data:

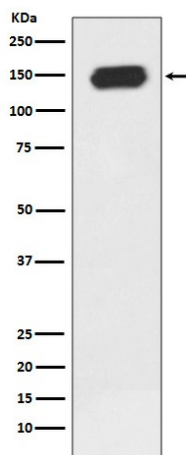
Product Type:	Primary Antibodies
Applications:	IF, IP, WB
Recommended Dilution:	WB: 1/1000-1/5000 ICC/IF: 1/50-1/200 IP: 1/50
Reactivity:	Human, Mouse, Rat
Host:	Rabbit
Isotype:	IgG
Clonality:	Polyclonal
Immunogen:	A synthesized peptide derived from human PLCG1
Formulation:	Rabbit IgG in phosphate buffered saline , pH 7.4, 150mM NaCl, 0.02% sodium azide and 50% glycerol.
Concentration:	lot specific
Purification:	Affinity Chromatography
Conjugation:	Unconjugated
Storage:	Store at 4°C short term. Aliquot and store at -20°C long term. Avoid freeze/thaw cycles.
Stability:	1 year
Predicted Protein Size:	149kDa
Gene Name:	phospholipase C gamma 1
Database Link:	Entrez Gene 5335 Human P19174
Background:	Swiss-Prot Acc.P19174.The protein encoded by this gene catalyzes the formation of inositol 1,4,5-trisphosphate and diacylglycerol from phosphatidylinositol 4,5-bisphosphate. This reaction uses calcium as a cofactor and plays an important role in the intracellular transduction of receptor-mediated tyrosine kinase activators. For example, when activated by SRC, the encoded protein causes the Ras guanine nucleotide exchange factor RasGRP1 to translocate to the Golgi, where it activates Ras.



[View online »](#)

Synonyms: 1-phosphatidyl-D-myo-inositol-4,5-bisphosphate; inositoltrisphosphohydrolase; NCKAP3; OTTHUMP00000178982; PLC-148; PLC-gamma-1; PLC-II; PLC1; PLC148; PLCgamma1

Product images:



Western blot analysis of PLC gamma 1 in Jurkat lysates using PLCG1 antibody.