

Product datasheet for **TA384986**

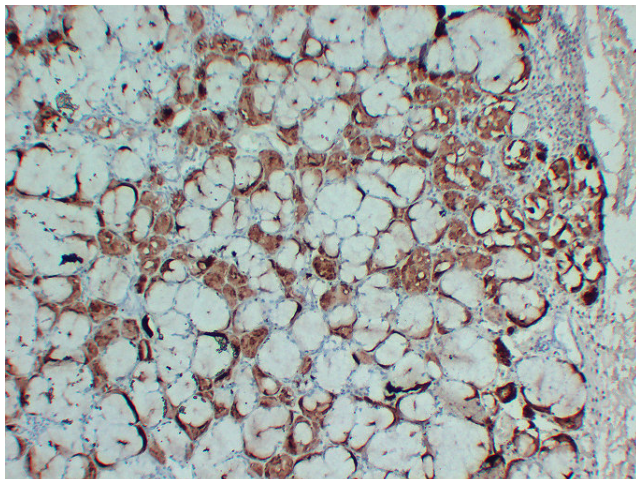
GCDFP 15 (PIP) Mouse Monoclonal Antibody [Clone ID: 4C6-8D2-1H1]

Product data:

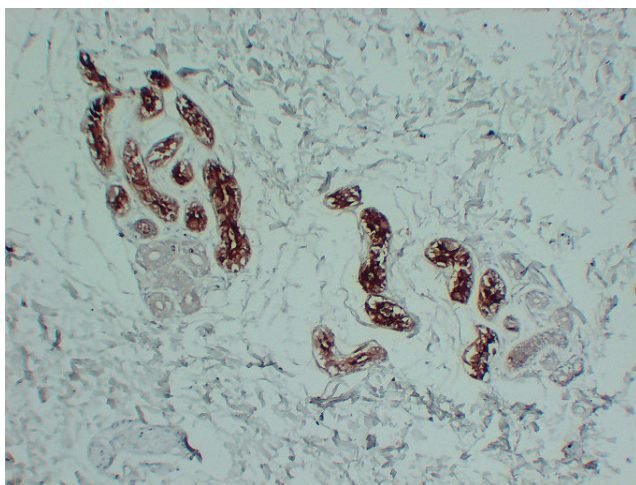
Product Type:	Primary Antibodies
Clone Name:	4C6-8D2-1H1
Applications:	IHC
Recommended Dilution:	IHC-p: 1/100-1/500
Reactivity:	Human
Host:	Mouse
Isotype:	IgG1, kappa
Clonality:	Monoclonal
Immunogen:	Synthesized peptide derived from human Gross cystic disease fluid protein-15 (GCDFP-15)
Formulation:	Liquid in PBS containing 50% glycerol, 0.5% BSA and 0.02% sodium azide, pH 7.3.
Concentration:	lot specific
Purification:	Affinity Chromatography
Conjugation:	Unconjugated
Storage:	Store at 4°C short term. Aliquot and store at -20°C long term. Avoid freeze/thaw cycles.
Stability:	1 year
Gene Name:	prolactin induced protein
Database Link:	Entrez Gene 5304 Human P12273
Background:	Swiss-Prot Acc.P12273.
Synonyms:	GCDFP-15; GCDFP15; gp17; GPIP4; SABP



[View online »](#)

Product images:

Immunohistochemical analysis of paraffin-embedded human Salivary glands. 1, Gross cystic disease fluid protein-15 (GCDFP-15) Antibody was diluted at 1:200(4°, overnight). 2, EDTA pH 8.0 was used for antigen retrieval



Immunohistochemical analysis of paraffin-embedded human Skin. 1, Gross cystic disease fluid protein-15 (GCDFP-15) Antibody was diluted at 1:200(4°, overnight). 2, EDTA pH 8.0 was used for antigen retrieval