

Product datasheet for **TA384837**

p95 NBS1 (NBN) Rabbit Polyclonal Antibody

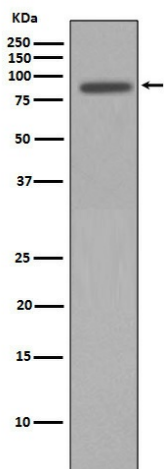
Product data:

Product Type:	Primary Antibodies
Applications:	FC, IF, IHC, IP, WB
Recommended Dilution:	WB: 1/1000-1/2000 IHC: 1/50-1/200 ICC/IF: 1/50-1/200 IP: 1/50 FC: 1/50
Reactivity:	Human, Mouse, Rat
Host:	Rabbit
Isotype:	IgG
Clonality:	Polyclonal
Immunogen:	A synthesized peptide derived from human p95/NBS1
Formulation:	Rabbit IgG in phosphate buffered saline , pH 7.4, 150mM NaCl, 0.02% sodium azide and 50% glycerol.
Concentration:	lot specific
Purification:	Affinity Chromatography
Conjugation:	Unconjugated
Storage:	Store at 4°C short term. Aliquot and store at -20°C long term. Avoid freeze/thaw cycles.
Stability:	1 year
Predicted Protein Size:	95kDa
Gene Name:	nibrin
Database Link:	Entrez Gene 4683 Human O60934
Background:	Swiss-Prot Acc.O60934.NBS1 is a member of the MRE11/RAD50 double-strand break repair complex. Involved in DNA double-strand break repair and DNA damage-induced checkpoint activation. Mutation results in the Nijmegen breakage syndrome (NBS), an autosomal recessive chromosomal instability syndrome.
Synonyms:	AT-V1; AT-V2; ATV; FLJ10155; MGC87362; NBS; NBS1; nibrin; P95

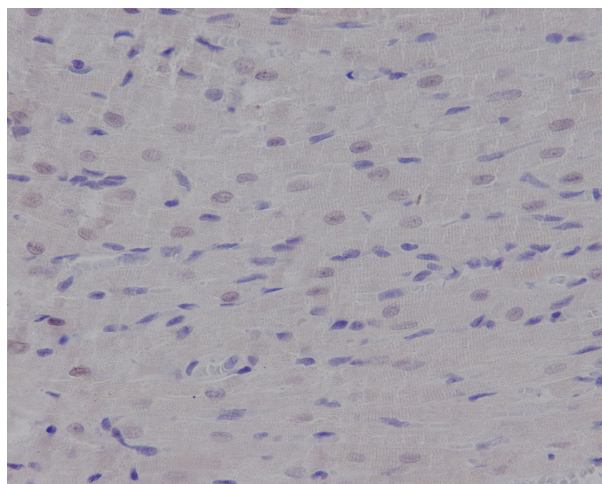


[View online »](#)

Product images:



Western blot analysis of p95/NBS1 in HeLa lysates using Nibrin antibody.



Immunohistochemistry analysis of paraffin-embedded rat heart using p95/NBS1 antibody. High-pressure and temperature Sodium Citrate pH 6.0 was used for antigen retrieval.