

## Product datasheet for **TA384708**

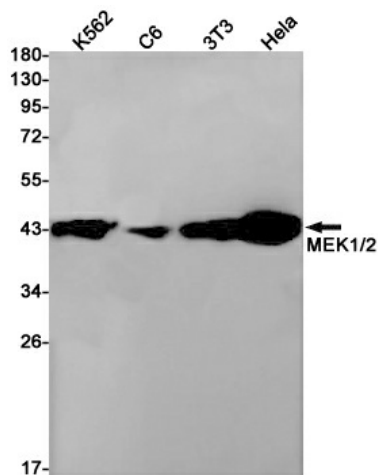
### MEK1 (MAP2K1) Rabbit Monoclonal Antibody [Clone ID: R08-6A7]

#### Product data:

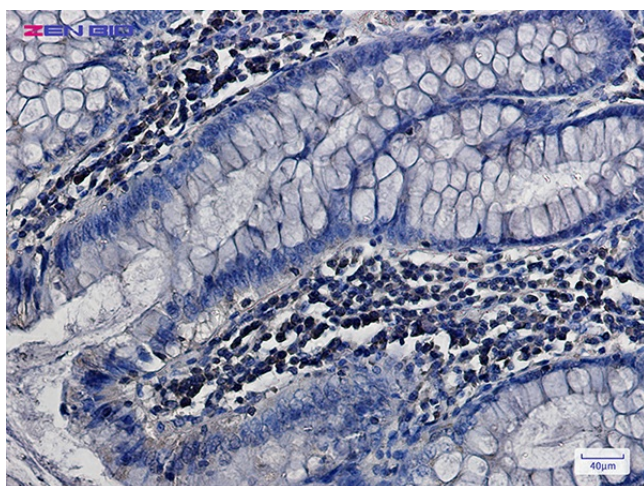
Product Type:	Primary Antibodies
Clone Name:	R08-6A7
Applications:	IF, IHC, IP, WB
Recommended Dilution:	WB: 1/1000 IHC: 1/100 ICC/IF: 1/20 IP: 1/20
Reactivity:	Human, Mouse, Rat
Host:	Rabbit
Isotype:	IgG
Clonality:	Monoclonal
Immunogen:	Recombinant protein of human MEK1/2
Formulation:	50mM Tris-Glycine(pH 7.4), 0.15M NaCl, 40% Glycerol, 0.01% Sodium azide and 0.05% BSA
Concentration:	lot specific
Purification:	Affinity Purified
Conjugation:	Unconjugated
Storage:	Store at 4°C short term. Aliquot and store at -20°C long term. Avoid freeze/thaw cycles.
Stability:	1 year
Predicted Protein Size:	Calculated MW: 43 kDa; Observed MW: 43 kDa
Gene Name:	mitogen-activated protein kinase kinase 1
Database Link:	<a href="#">Entrez Gene 5604 Human Q02750</a>
Background:	Swiss-Prot Acc.P36507.Catalyzes the concomitant phosphorylation of a threonine and a tyrosine residue in a Thr-Glu-Tyr sequence located in MAP kinases. Activates the ERK1 and ERK2 MAP kinases .
Synonyms:	MAPKK1; MEK1; MKK1; PRKMK1



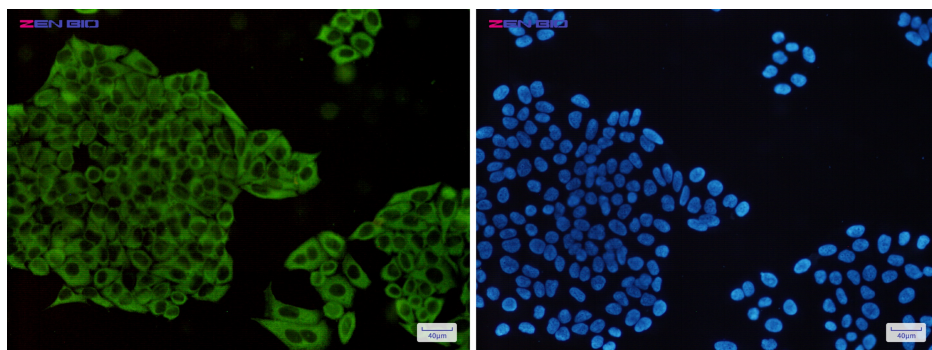
[View online »](#)

**Product images:**


Western blot detection of MEK1/2 in K562, C6, 3T3, HeLa cell lysates using MEK1/2 Rabbit mAb (1:1000 diluted). Predicted band size: 43 kDa. Observed band size: 43 kDa.



Immunohistochemistry of MEK1/2 in paraffin-embedded Human colon cancer tissue using MEK1/2 Rabbit mAb at dilution 1/5



Immunocytochemistry of MEK1/2 (green) in HeLa cells using MEK1/2 Rabbit mAb at dilution 1/50, and DAPI (blue)