

Product datasheet for **TA384626**

Cytokeratin 17 (KRT17) Mouse Polyclonal Antibody

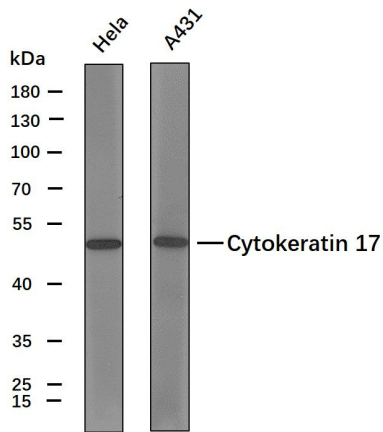
Product data:

Product Type:	Primary Antibodies
Applications:	IHC, WB
Recommended Dilution:	IHC-p: 1/100-1/500 WB: 1/500-1/2000
Reactivity:	Human
Host:	Mouse
Isotype:	IgG1, kappa
Clonality:	Polyclonal
Immunogen:	Synthesized peptide derived from human Cytokeratin 17
Formulation:	Liquid in PBS containing 50% glycerol, 0.5% BSA and 0.02% sodium azide, pH 7.3.
Concentration:	lot specific
Purification:	Affinity Chromatography
Conjugation:	Unconjugated
Storage:	Store at 4°C short term. Aliquot and store at -20°C long term. Avoid freeze/thaw cycles.
Stability:	1 year
Predicted Protein Size:	Observed MW (kDa): 48
Gene Name:	keratin 17
Database Link:	Entrez Gene 3872 Human Q04695
Background:	Swiss-Prot Acc.Q04695.
Synonyms:	39.1; CK-17; Cytokeratin-17; K17; Keratin-17; PC; PC2; PCHC1



[View online »](#)

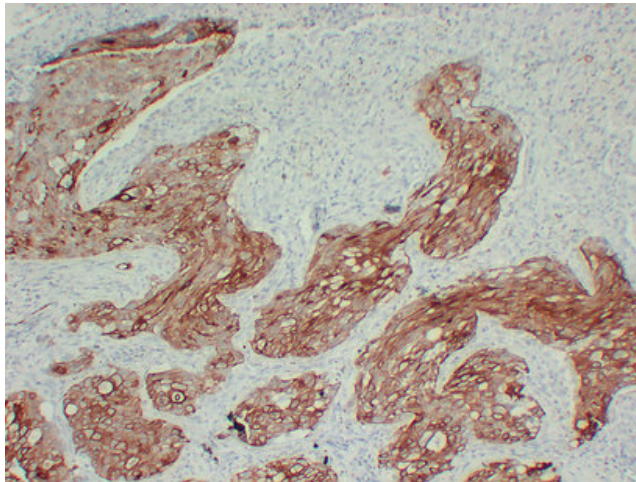
Product images:



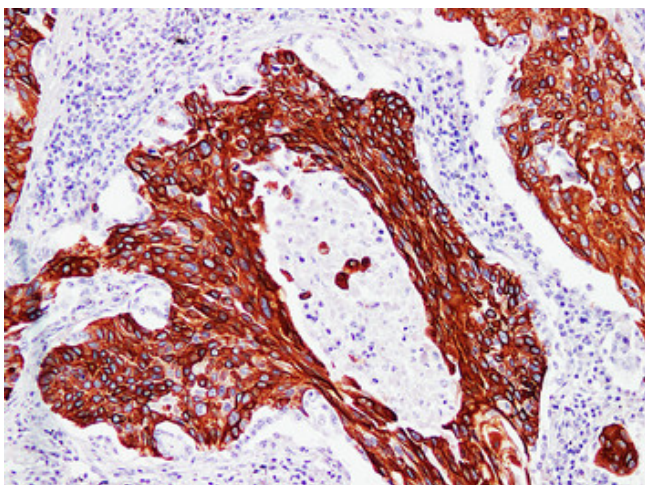
Various whole cell lysates (30ug) were separated by 10% SDS-PAGE, and the membrane was blotted with Cytokeratin 17 antibody. The HRP-conjugated anti-Mouse IgG antibody was used to detect the antibody.

Predicted band size: 48kDa

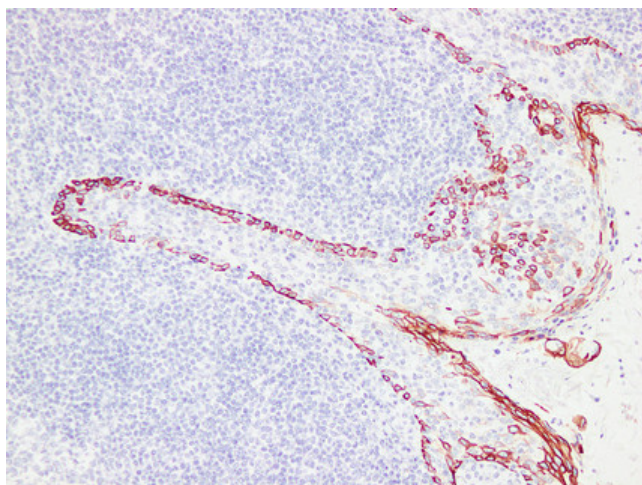
Western blot analysis of CK-17Antibody at 1:1000 dilution.



Immunohistochemical analysis of paraffin-embedded Lung squamous carcinoma. 1, Antibody was diluted at 1:200(4°, overnight). 2, Tris-EDTA, pH8.0 was used for antigen retrieval. 3, Secondary antibody was diluted at 1:200(room temperature, 30min).



Immunohistochemical analysis of paraffin-embedded Lung squamous carcinoma. 1, Antibody was diluted at 1:200(4°,overnight). 2, Tris-EDTA,pH8.0 was used for antigen retrieval. 3,Secondary antibody was diluted at 1:200(room temperature, 30min).



Immunohistochemical analysis of paraffin-embedded Tonsil. 1, Antibody was diluted at 1:200(4°,overnight). 2, Tris-EDTA,pH8. was used for antigen retrieval. 3,Secondary antibody was diluted at 1:200(room temperature, 30min).