

Product datasheet for **TA384625**

Cytokeratin 17 (KRT17) Mouse Monoclonal Antibody [Clone ID: 8C6-4H2-5C1]

Product data:

Product Type:	Primary Antibodies
Clone Name:	8C6-4H2-5C1
Applications:	IF, IHC, IP, WB
Recommended Dilution:	WB: 1/1000 IP: 1/200 IF: 1/200 IHC: 1/50-300
Reactivity:	Human
Host:	Mouse
Isotype:	IgG1
Clonality:	Monoclonal
Immunogen:	Synthetic Peptide of CK17
Formulation:	Liquid in PBS containing 50% glycerol, 0.5% BSA and 0.03% Proclin 300, pH 7.3.
Concentration:	lot specific
Purification:	Affinity Purified
Conjugation:	Unconjugated
Storage:	Store at 4°C short term. Aliquot and store at -20°C long term. Avoid freeze/thaw cycles.
Stability:	1 year
Predicted Protein Size:	Observed MW (kDa):48
Gene Name:	keratin 17
Database Link:	Entrez Gene 3872 Human Q04695



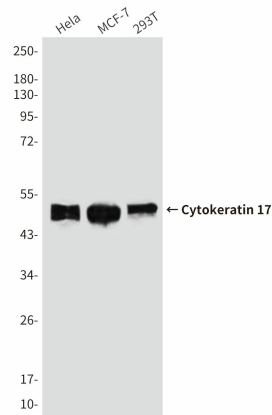
[View online »](#)

Background:

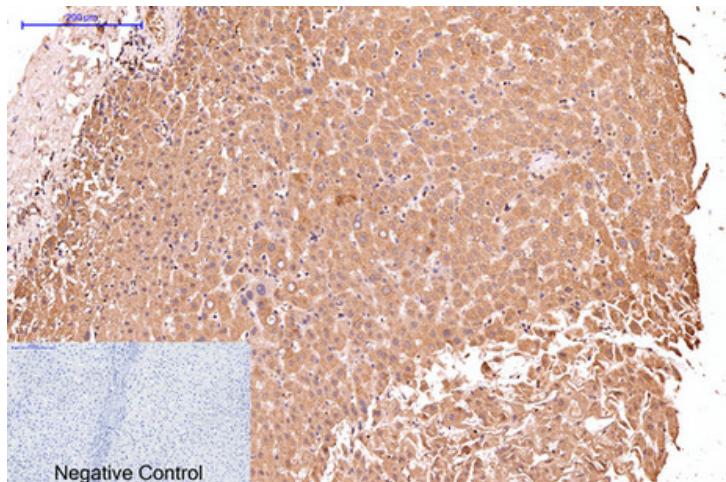
Swiss-Prot Acc.Q04695.Type I keratin involved in the formation and maintenance of various skin appendages, specifically in determining shape and orientation of hair . Required for the correct growth of hair follicles, in particular for the persistence of the anagen (growth) state . Modulates the function of TNF-alpha in the specific context of hair cycling. Regulates protein synthesis and epithelial cell growth through binding to the adapter protein SFN and by stimulating Akt/mTOR pathway . Involved in tissue repair. May be a marker of basal cell differentiation in complex epithelia and therefore indicative of a certain type of epithelial

Synonyms:

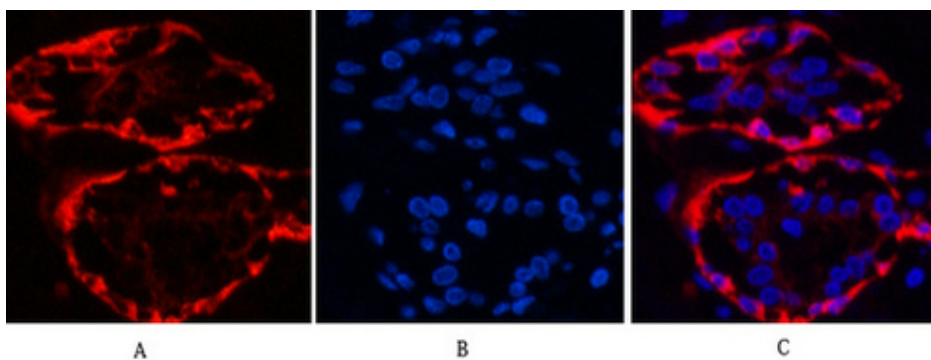
39.1; CK-17; Cytokeratin-17; K17; Keratin-17; PC; PC2; PCHC1

Product images:

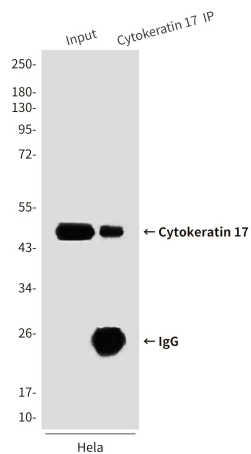
Western blot analysis of Cytokeratin 17 (8C6) in HeLa, MCF-7, 293T lysates using Cytokeratin 17 (8C6) antibody



Immunohistochemistry analysis of paraffin-embedded Human liver tissue using Cytokeratin 17 (8C6) antibody. High-pressure and temperature Sodium Citrate pH 6.0 was used for antigen retrieval. Negative control was used by secondary antibody only.



Immunofluorescence analysis of Cytokeratin 17 (8C6) in Human breast tissue using CK17 antibody (red), and DAPI (blue).



Immunoprecipitation analysis of Cytokeratin 17 in HeLa lysates using Cytokeratin 17 (8C6) antibody