

## Product datasheet for **TA384452**

### **p21 Ras (HRAS) Rabbit Monoclonal Antibody [Clone ID: R09-7E8]**

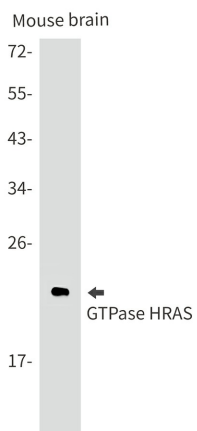
#### **Product data:**

<b>Product Type:</b>	Primary Antibodies
<b>Clone Name:</b>	R09-7E8
<b>Applications:</b>	IF, IP, WB
<b>Recommended Dilution:</b>	WB: 1/1000 ICC/IF: 1/50 IP: 1/20
<b>Reactivity:</b>	Human, Mouse, Rat
<b>Host:</b>	Rabbit
<b>Isotype:</b>	IgG
<b>Clonality:</b>	Monoclonal
<b>Immunogen:</b>	Recombinant protein of human RAS
<b>Formulation:</b>	50mM Tris-Glycine(pH 7.4), 0.15M NaCl, 40% Glycerol, 0.01% Sodium azide and 0.05% BSA
<b>Concentration:</b>	lot specific
<b>Purification:</b>	Affinity Purified
<b>Conjugation:</b>	Unconjugated
<b>Storage:</b>	Store at 4°C short term. Aliquot and store at -20°C long term. Avoid freeze/thaw cycles.
<b>Stability:</b>	1 year
<b>Predicted Protein Size:</b>	Calculated MW: 21 kDa; Observed MW: 21 kDa
<b>Gene Name:</b>	Harvey rat sarcoma viral oncogene homolog
<b>Database Link:</b>	<a href="#">Entrez Gene 3265 Human P01111</a>
<b>Background:</b>	Swiss-Prot Acc.P01111.Ras proteins bind GDP/GTP and possess intrinsic GTPase activity.MiscellaneousMutations which change AA 12, 13 or 61 activate the potential of Ras to transform cultured cells and are implicated in a variety of human tumors.
<b>Synonyms:</b>	C-BAS/HAS; C-H-RAS; C-HA-RAS1; CTLO; H-Ras-1; H-RASIDX; Ha-Ras; HAMSIV; HRAS1; K-RAS; N-RAS; OTTHUMP00000162769; OTTHUMP00000166053; OTTHUMP00000166055; p21ras; RASH1

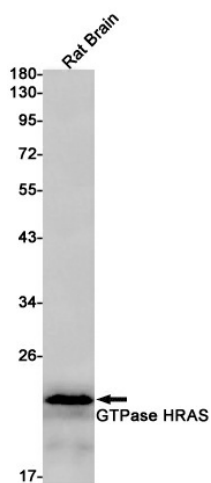


[View online »](#)

**Product images:**



Western blot analysis of GTPase HRAS in mouse brain lysates using GTPase HRAS antibody.



Western blot analysis of RAS in rat Brain lysates using RAS antibody.