

Product datasheet for **TA384288**

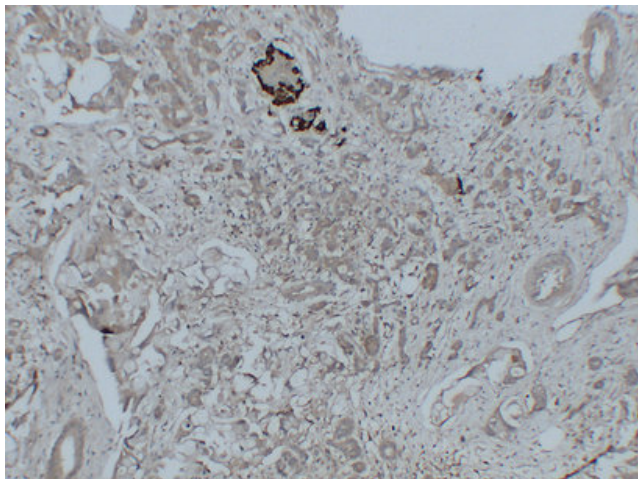
GLP1 (GCG) Mouse Monoclonal Antibody [Clone ID: 5B6-8B6-3A3]

Product data:

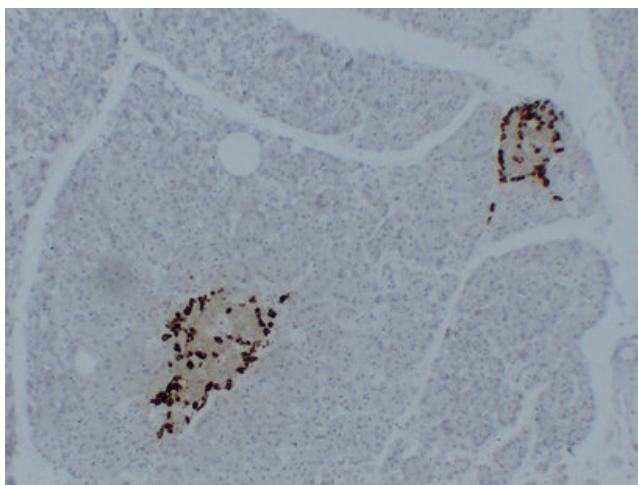
Product Type:	Primary Antibodies
Clone Name:	5B6-8B6-3A3
Applications:	IHC
Recommended Dilution:	IHC-p: 1/100-1/500
Reactivity:	Human
Host:	Mouse
Isotype:	IgG2b, kappa
Clonality:	Monoclonal
Immunogen:	Synthesized peptide derived from human Glucagon
Formulation:	Liquid in PBS containing 50% glycerol, 0.5% BSA and 0.02% sodium azide, pH 7.3.
Concentration:	lot specific
Purification:	Affinity Chromatography
Conjugation:	Unconjugated
Storage:	Store at 4°C short term. Aliquot and store at -20°C long term. Avoid freeze/thaw cycles.
Stability:	1 year
Gene Name:	glucagon
Database Link:	Entrez Gene 2641 Human P01275
Background:	Swiss-Prot Acc.P01275.
Synonyms:	GLP1; GLP2; glucagon; GRPP



[View online »](#)

Product images:

Immunohistochemical analysis of paraffin-embedded Pancreatic carcinoma. 1, Antibody was diluted at 1:200(4°, overnight). 2, Citric acid ,pH6.0 was used for antigen retrieval. 3, Secondary antibody was diluted at 1:200(room temperature, 30min).



Immunohistochemical analysis of paraffin-embedded Pancreatic carcinoma. 1, Antibody was diluted at 1:200(4°, overnight). 2, Citric acid ,pH6.0 was used for antigen retrieval. 3, Secondary antibody was diluted at 1:200(room temperature, 30min).