

Product datasheet for **TA384189**

Estrogen Receptor 1 (ESR1) Rabbit Polyclonal Antibody

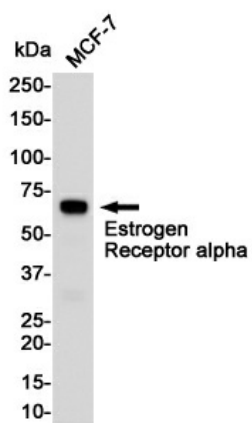
Product data:

Product Type:	Primary Antibodies
Applications:	ChIP, FC, IHC, IP, WB
Recommended Dilution:	WB: 1/1000 IHC: 1/20 FC: 1/20 IP: 1/20 ChIP: 1/20
Reactivity:	Human
Host:	Rabbit
Isotype:	IgG
Clonality:	Polyclonal
Immunogen:	A synthetic peptide of human Estrogen Receptor alpha
Formulation:	50mM Tris-Glycine(pH 7.4), 0.15M NaCl, 40% Glycerol, 0.01% Sodium azide and 0.05% BSA
Concentration:	lot specific
Purification:	Affinity Purified
Conjugation:	Unconjugated
Storage:	Store at 4°C short term. Aliquot and store at -20°C long term. Avoid freeze/thaw cycles.
Stability:	1 year
Predicted Protein Size:	Calculated MW: 66 kDa; Observed MW: 66 kDa
Gene Name:	estrogen receptor 1
Database Link:	Entrez Gene 2099 Human P03372
Background:	Swiss-Prot Acc.P03372.
Synonyms:	DKFZp686N23123; ER; ER-alpha; Era; ESR; ESRA; NR3A1

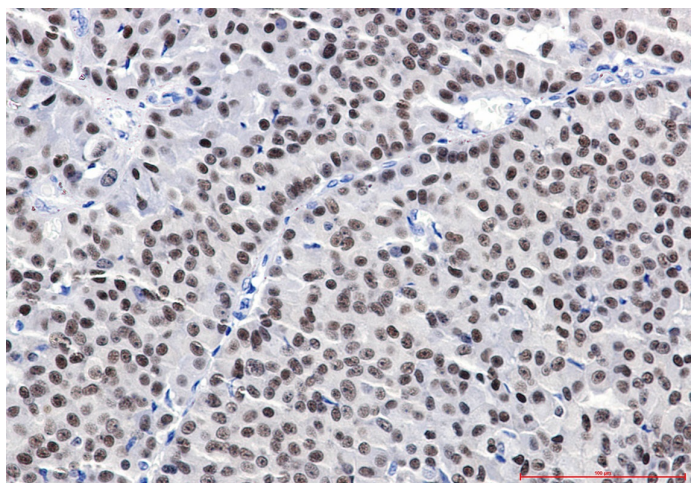


[View online »](#)

Product images:



Western blot analysis of Estrogen Receptor α in MCF-7 lysates using Estrogen Receptor alpha antibody.



Immunohistochemistry analysis of paraffin-embedded Human breast cancer using Estrogen Receptor alpha antibody. High-pressure and temperature Sodium Citrate pH 6.0 was used for antigen retrieval.