

Product datasheet for **TA384109**

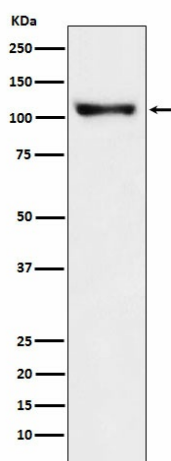
PSD93 (DLG2) Rabbit Polyclonal Antibody

Product data:

Product Type:	Primary Antibodies
Applications:	FC, IP, WB
Recommended Dilution:	WB: 1/500-1/2000 IP: 1/50 FC: 1/100
Reactivity:	Human, Mouse, Rat
Host:	Rabbit
Isotype:	IgG
Clonality:	Polyclonal
Immunogen:	A synthesized peptide derived from human PSD93
Formulation:	Rabbit IgG in phosphate buffered saline , pH 7.4, 150mM NaCl, 0.02% sodium azide and 50% glycerol.
Concentration:	lot specific
Purification:	Affinity Chromatography
Conjugation:	Unconjugated
Storage:	Store at 4°C short term. Aliquot and store at -20°C long term. Avoid freeze/thaw cycles.
Stability:	1 year
Predicted Protein Size:	110kDa
Gene Name:	discs large MAGUK scaffold protein 2
Database Link:	Entrez Gene 1740 Human Q15700
Background:	Swiss-Prot Acc.Q15700.Required for perception of chronic pain through NMDA receptor signaling. Regulates surface expression of NMDA receptors in dorsal horn neurons of the spinal cord. Interacts with the cytoplasmic tail of NMDA receptor subunits as well as inward rectifying potassium channels.
Synonyms:	chapsyn-110; DKFZp781D1854; DKFZp781E0954; FLJ37266; MGC131811; OTTHUMP00000165971; PSD-93; PSD93



[View online »](#)

Product images:

Western blot analysis of PSD93 in SH-SY5Y lysates using PSD93 antibody.