

## Product datasheet for **TA384058**

### beta Catenin (CTNNB1) Rabbit Monoclonal Antibody [Clone ID: R06-1E2]

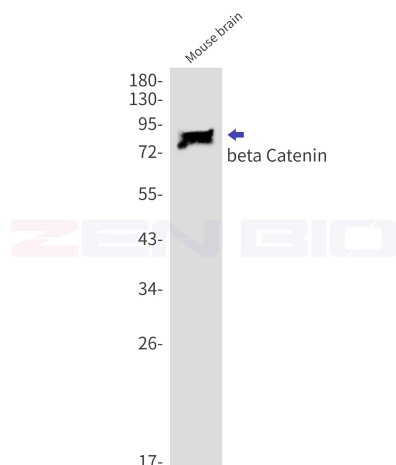
#### Product data:

Product Type:	Primary Antibodies
Clone Name:	R06-1E2
Applications:	IHC, IP, WB
Recommended Dilution:	WB: 1/2000 IHC: 1/50 IP: 1/20
Reactivity:	Human, Mouse, Rat, Hamster
Host:	Rabbit
Isotype:	IgG
Clonality:	Monoclonal
Immunogen:	A synthetic peptide of human beta Catenin
Formulation:	50mM Tris-Glycine(pH 7.4), 0.15M NaCl, 40% Glycerol, 0.01% Sodium azide and 0.05% BSA
Concentration:	lot specific
Purification:	Affinity Purified
Conjugation:	Unconjugated
Storage:	Store at 4°C short term. Aliquot and store at -20°C long term. Avoid freeze/thaw cycles.
Stability:	1 year
Predicted Protein Size:	Calculated MW: 86 kDa; Observed MW: 86 kDa
Gene Name:	catenin beta 1
Database Link:	<a href="#">Entrez Gene 1499 Human P35222</a>
Background:	Swiss-Prot Acc.P35222.
Synonyms:	beta-catenin; CTNNB; DKFZp686D02253; FLJ25606; FLJ37923; OTTHUMP00000209288

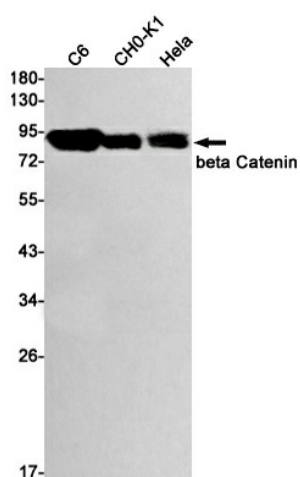


[View online »](#)

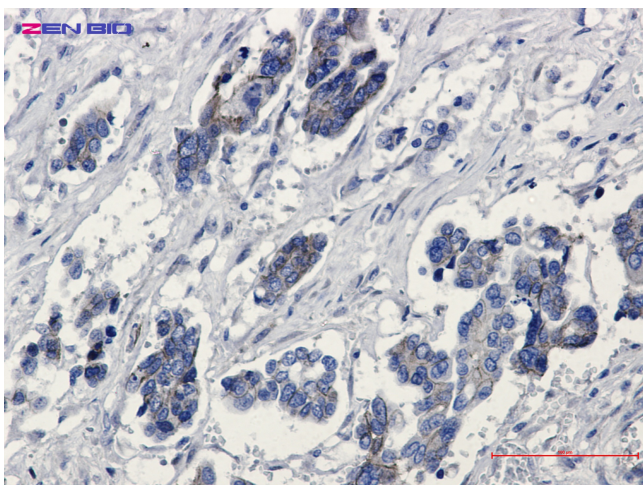
## Product images:



Western blot detection of beta Catenin in Mouse brain lysates using beta Catenin antibody. Predicted band size: 86kDa. Observed band size: 86kDa.



Western blot detection of beta Catenin in C6, CHO-K1, HeLa cell lysates using beta Catenin Rabbit mAb (1:1000 diluted). Predicted band size: 86kDa. Observed band size: 86kDa.



Immunohistochemistry of beta Catenin in paraffin-embedded Human Cholangiocarcinoma using beta Catenin Rabbit mAb at dilution 1/50