

## Product datasheet for **TA384052**

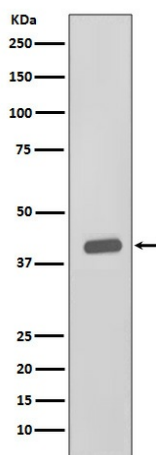
### CKII alpha (CSNK2A1) Rabbit Polyclonal Antibody

#### Product data:

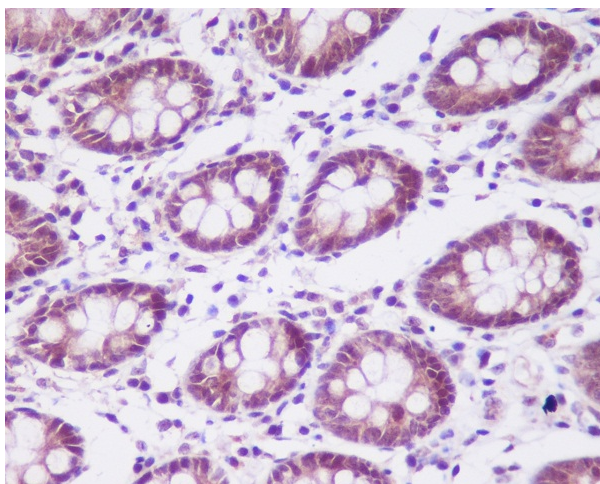
Product Type:	Primary Antibodies
Applications:	FC, IHC, WB
Recommended Dilution:	WB: 1/500-1/2000 IHC: 1/50-1/200 FC: 1/50
Reactivity:	Human, Mouse, Rat
Host:	Rabbit
Isotype:	IgG
Clonality:	Polyclonal
Immunogen:	A synthesized peptide derived from human CKII alpha
Formulation:	Rabbit IgG in phosphate buffered saline , pH 7.4, 150mM NaCl, 0.02% sodium azide and 50% glycerol.
Concentration:	lot specific
Purification:	Affinity Chromatography
Conjugation:	Unconjugated
Storage:	Store at 4°C short term. Aliquot and store at -20°C long term. Avoid freeze/thaw cycles.
Stability:	1 year
Predicted Protein Size:	45kDa
Gene Name:	casein kinase 2 alpha 1
Database Link:	<a href="#">Entrez Gene 1457 Human P68400</a>
Background:	Swiss-Prot Acc.P68400.Catalytic subunit of a constitutively active serine/threonine-protein kinase complex that phosphorylates a large number of substrates containing acidic residues C-terminal to the phosphorylated serine or threonine. Regulates numerous cellular processes, such as cell cycle progression, apoptosis and transcription, as well as viral infection. May act as a regulatory node which integrates and coordinates numerous signals leading to an appropriate cellular response.
Synonyms:	CK2A1; CKII



[View online »](#)

**Product images:**

Western blot analysis of CKII alpha in HeLa lysates using CKII alpha antibody.



Immunohistochemistry analysis of paraffin-embedded Human colon using CKII alpha antibody. High-pressure and temperature Sodium Citrate pH 6.0 was used for antigen retrieval.