

Product datasheet for **TA384026**

COL13A1 Rabbit Polyclonal Antibody

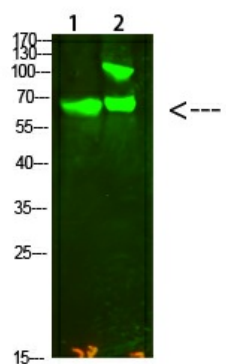
Product data:

Product Type:	Primary Antibodies
Applications:	ELISA, WB
Recommended Dilution:	WB: 1/500-2000
Reactivity:	Human, Mouse
Host:	Rabbit
Isotype:	IgG
Clonality:	Polyclonal
Immunogen:	Synthesized peptide derived from human COL13A1. at AA range: 41-90
Formulation:	Liquid in PBS containing 50% glycerol, 0.5% BSA and 0.02% sodium azide, pH 7.3.
Concentration:	lot specific
Purification:	Affinity Purified
Conjugation:	Unconjugated
Storage:	Store at 4°C short term. Aliquot and store at -20°C long term. Avoid freeze/thaw cycles.
Stability:	1 year
Predicted Protein Size:	Observed MW (kDa):70
Database Link:	Q5TAT6
Background:	Swiss-Prot Acc.Q5TAT6.



[View online »](#)

Product images:



Western blot analysis of Collagen XIII alpha 1 in HeLa, mouse kidney lysates using Collagen XIII alpha 1 antibody.