

## Product datasheet for **TA383984**

### **p16INK4A (CDKN2A) Rabbit Monoclonal Antibody [Clone ID: R02-6H1]**

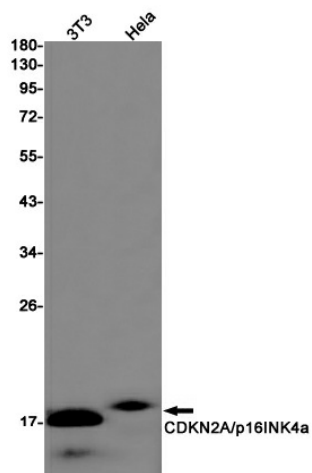
#### **Product data:**

<b>Product Type:</b>	Primary Antibodies
<b>Clone Name:</b>	R02-6H1
<b>Applications:</b>	IP, WB
<b>Recommended Dilution:</b>	WB: 1/1000 IP: 1/20
<b>Reactivity:</b>	Human, Mouse
<b>Host:</b>	Rabbit
<b>Isotype:</b>	IgG
<b>Clonality:</b>	Monoclonal
<b>Immunogen:</b>	Recombinant protein of human CDKN2A/p16INK4a
<b>Formulation:</b>	50mM Tris-Glycine(pH 7.4), 0.15M NaCl, 40% Glycerol, 0.01% Sodium azide and 0.05% BSA
<b>Concentration:</b>	lot specific
<b>Purification:</b>	Affinity Purified
<b>Conjugation:</b>	Unconjugated
<b>Storage:</b>	Store at 4°C short term. Aliquot and store at -20°C long term. Avoid freeze/thaw cycles.
<b>Stability:</b>	1 year
<b>Predicted Protein Size:</b>	Calculated MW: 17 kDa; Observed MW: 17 kDa
<b>Gene Name:</b>	cyclin-dependent kinase inhibitor 2A
<b>Database Link:</b>	<a href="#">Entrez Gene 1029 Human P42771</a>
<b>Background:</b>	Swiss-Prot Acc.P42771.Acts as a negative regulator of the proliferation of normal cells by interacting strongly with CDK4 and CDK6. This inhibits their ability to interact with cyclins D and to phosphorylate the retinoblastoma protein.
<b>Synonyms:</b>	ARF; CDK4I; CDKN2; CMM2; INK4; INK4a; MLM; MTS-1; MTS1; OTTHUMP00000021148; p14; p14ARF; p16; p16-INK4; p16-INK4a; p16INK4; p16INK4a; p19; p19Arf; TP16



[View online »](#)

## Product images:



Western blot analysis of CDKN2A/p16INK4a in 3T3, HeLa lysates using CDKN2A antibody.