

## Product datasheet for **TA383976**

### CAF1 (CHAF1A) Rabbit Monoclonal Antibody [Clone ID: R06-3A5]

#### Product data:

Product Type:	Primary Antibodies
Clone Name:	R06-3A5
Applications:	IF, IHC, IP, WB
Recommended Dilution:	WB: 1/1000 IHC: 1/50 ICC/IF: 1/200-1/1000 IP: 1/20
Reactivity:	Human
Host:	Rabbit
Isotype:	IgG
Clonality:	Monoclonal
Immunogen:	A synthetic peptide of human p150 CAF1
Formulation:	50mM Tris-Glycine(pH 7.4), 0.15M NaCl, 40% Glycerol, 0.01% Sodium azide and 0.05% BSA
Concentration:	lot specific
Purification:	Affinity Purified
Conjugation:	Unconjugated
Storage:	Store at 4°C short term. Aliquot and store at -20°C long term. Avoid freeze/thaw cycles.
Stability:	1 year
Predicted Protein Size:	Calculated MW: 107 kDa; Observed MW: 150 kDa
Gene Name:	chromatin assembly factor 1 subunit A
Database Link:	<a href="#">Entrez Gene 10036 Human Q13111</a>



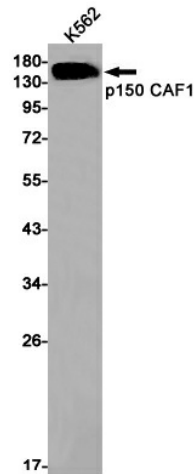
[View online »](#)

**Background:**

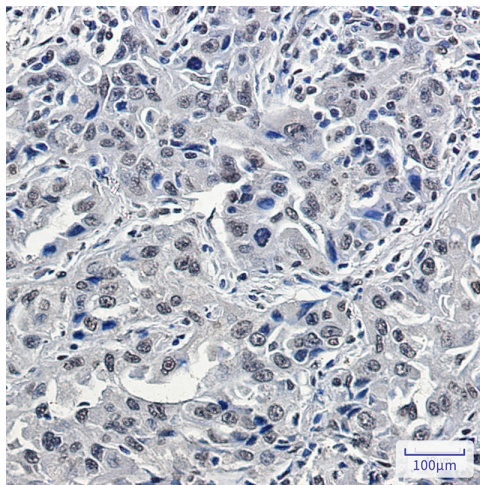
Swiss-Prot Acc.Q13111. Core component of the CAF-1 complex, a complex thought to mediate chromatin assembly in DNA replication and DNA repair. Assembles histone octamers onto replicating DNA in vitro. CAF-1 performs the first step of the nucleosome assembly process, bringing newly synthesized histones H3 and H4 to replicating DNA; histones H2A/H2B can bind to this chromatin precursor subsequent to DNA replication to complete the histone octamer. CHAF1A binds to histones H3 and H4. It may play a role in heterochromatin maintenance in proliferating cells by bringing newly synthesized cbx proteins to heterochromatic DNA replication foci.

**Synonyms:**

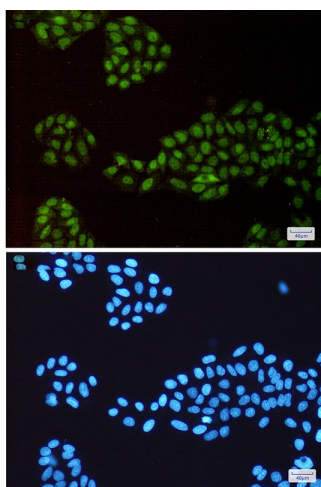
CAF; CAF-1; CAF-Ip150; CAF1; CAF1B; CAF1P150; hp150; MGC71229; P150

**Product images:**

Western blot analysis of p150 CAF1 in K562 lysates using p150 CAF1 antibody.



Immunohistochemistry analysis of paraffin-embedded Human lung cancer using p150 CAF1/CAF antibody. High-pressure and temperature Sodium Citrate pH 6.0 was used for antigen retrieval.



Immunocytochemistry analysis of p150 CAF1 (green) in HeLa using p150 CAF1 antibody, and DAPI (blue)