

Product datasheet for **TA383946**

B7-1 (CD80) Rabbit Polyclonal Antibody

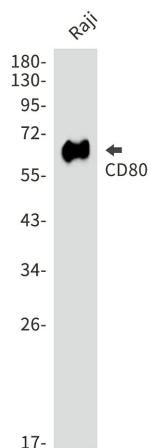
Product data:

Product Type:	Primary Antibodies
Applications:	IHC, WB
Recommended Dilution:	WB: 1/1000 IHC: 1/20-1/500
Reactivity:	Human
Host:	Rabbit
Isotype:	IgG
Clonality:	Polyclonal
Immunogen:	A synthetic peptide of human CD80
Formulation:	50mM Tris-Glycine(pH 7.4), 0.15M NaCl, 40% Glycerol, 0.01% Sodium azide and 0.05% BSA
Concentration:	lot specific
Purification:	Affinity Purified
Conjugation:	Unconjugated
Storage:	Store at 4°C short term. Aliquot and store at -20°C long term. Avoid freeze/thaw cycles.
Stability:	1 year
Predicted Protein Size:	Calculated MW: 33 kDa; Observed MW: 65 kDa
Gene Name:	CD80 molecule
Database Link:	Entrez Gene 941 Human P33681
Background:	Swiss-Prot Acc.P33681.
Synonyms:	B7; BB1; CD28LG; CD28LG1; LAB7



[View online »](#)

Product images:



Western blot analysis of CD80 in Raji lysates using CD80 antibody.