

## Product datasheet for **TA383919**

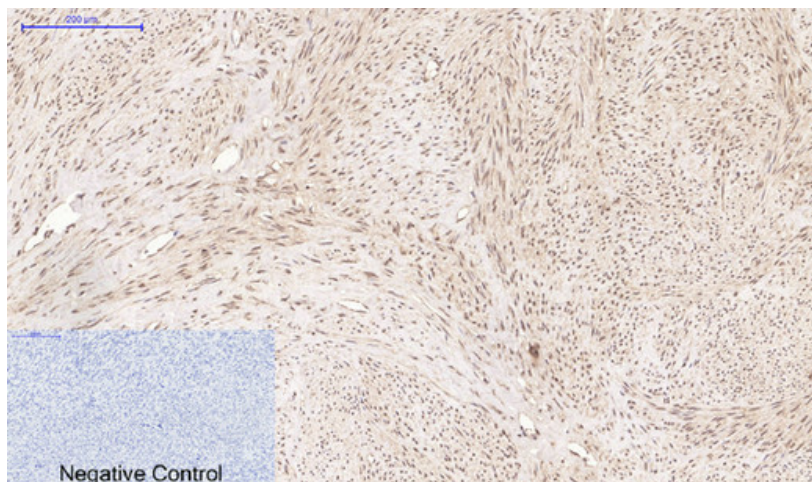
### CD10 (MME) Mouse Monoclonal Antibody [Clone ID: 7C7-1G5-10E3]

#### Product data:

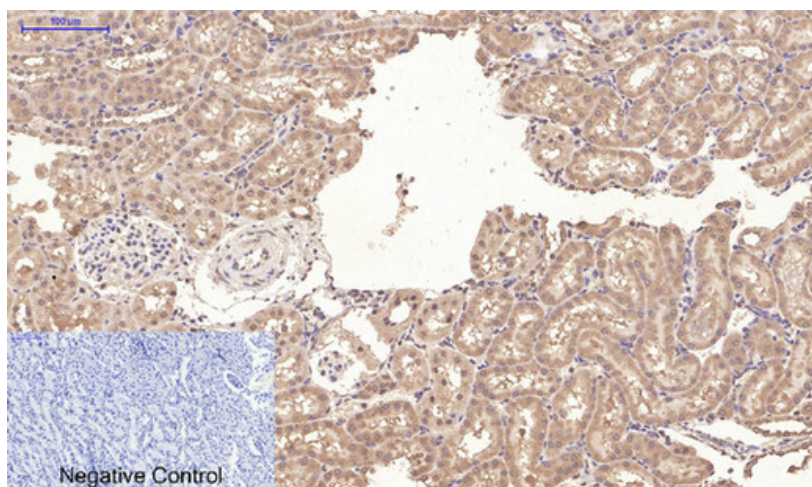
Product Type:	Primary Antibodies
Clone Name:	7C7-1G5-10E3
Applications:	IHC
Recommended Dilution:	IHC: 1/200
Reactivity:	Human, Rat, Mouse
Host:	Mouse
Isotype:	IgG1
Clonality:	Monoclonal
Immunogen:	Synthetic peptide conjugated to KLH.
Formulation:	Liquid in PBS containing 50% glycerol, 0.5% BSA and 0.03% Proclin 300, pH 7.3.
Concentration:	lot specific
Purification:	Affinity Purified
Conjugation:	Unconjugated
Storage:	Store at 4°C short term. Aliquot and store at -20°C long term. Avoid freeze/thaw cycles.
Stability:	1 year
Gene Name:	membrane metallo-endopeptidase
Database Link:	<a href="#">Entrez Gene 4311 Human P08473</a>
Background:	Swiss-Prot Acc.P08473. Thermolysin-like specificity, but is almost confined on acting on polypeptides of up to 30 amino acids (PubMed:15283675, PubMed:8168535). Biologically important in the destruction of opioid peptides such as Met- and Leu-enkephalins by cleavage of a Gly-Phe bond (PubMed:17101991). Able to cleave angiotensin-1, angiotensin-2 and angiotensin 1-9 (PubMed:15283675). Involved in the degradation of atrial natriuretic factor (ANF) (PubMed:2531377, PubMed:2972276). Displays UV-inducible elastase activity toward skin preelastic and elastic fibers (PubMed:20876573).
Synonyms:	atriopeptidase; CALLA; CD10; DKFZp686O16152; Enkephalinase; EPN; MGC126681; MGC126707; NEP; neprilysin



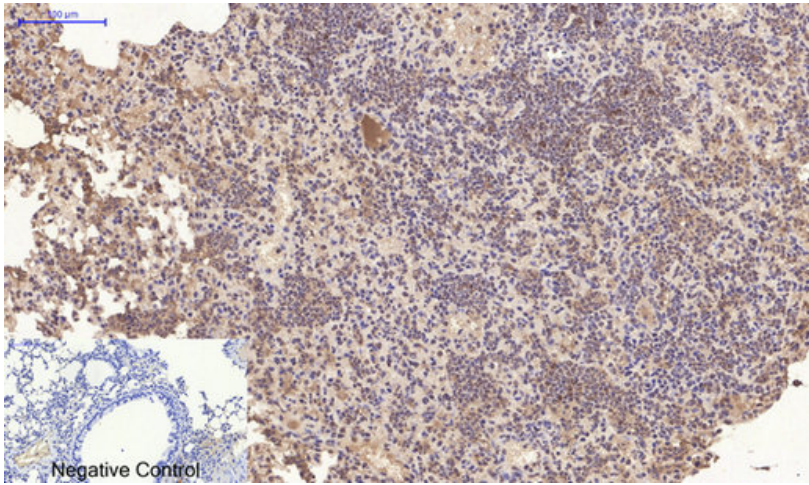
[View online »](#)

**Product images:**

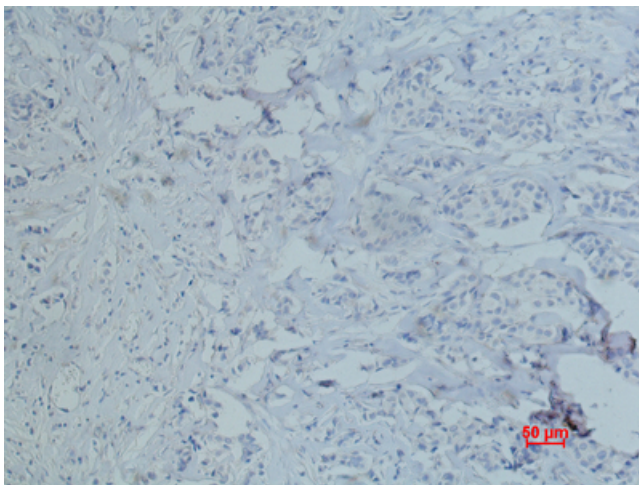
Immunohistochemistry analysis of paraffin-embedded Human uterus tissue using CD10 antibody. High-pressure and temperature Sodium Citrate pH 6.0 was used for antigen retrieval. Negative control was used by secondary antibody only.



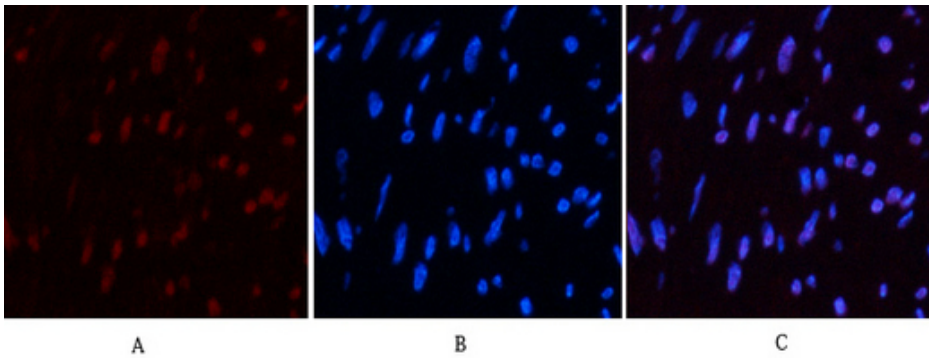
Immunohistochemistry analysis of paraffin-embedded rat kidney tissue using CD10 antibody. High-pressure and temperature Sodium Citrate pH 6.0 was used for antigen retrieval. Negative control was used by secondary antibody only.



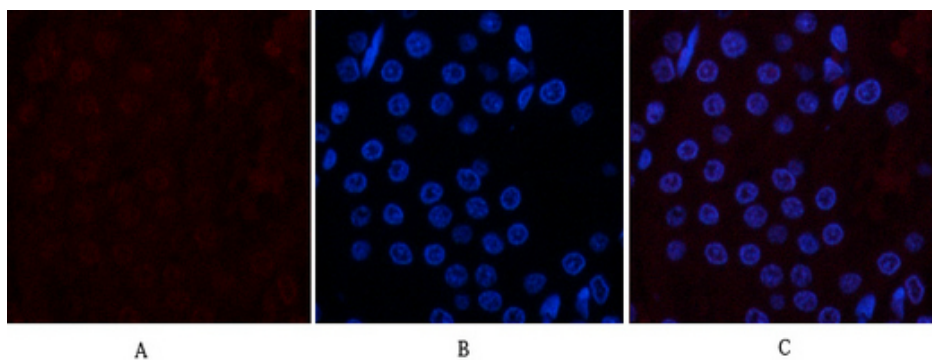
Immunohistochemistry analysis of paraffin-embedded mouse lung tissue using CD10 antibody. High-pressure and temperature Sodium Citrate pH 6.0 was used for antigen retrieval. Negative control was used by secondary antibody only.



Immunohistochemistry analysis of paraffin-embedded Human breast cancer using CD10 (7C7) antibody. High-pressure and temperature Sodium Citrate pH 6.0 was used for antigen retrieval.



Immunofluorescence analysis of CD10 (7C7) in Human uterus tissue using CD10 (7C7) antibody (red), and DAPI (blue).



Immunofluorescence analysis of CD10 (7C7) in rat kidney using CD10 antibody (red), and DAPI (blue).