

Product datasheet for **TA383828**

B Raf (BRAF) Rabbit Polyclonal Antibody

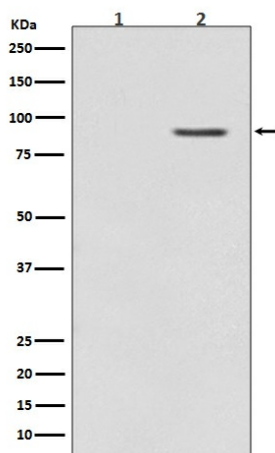
Product data:

| | |
|-------------------------|---|
| Product Type: | Primary Antibodies |
| Applications: | IF, IP, WB |
| Recommended Dilution: | WB: 1/500-1/2000 ICC/IF: 1/50-1/200 IP: 1/30 |
| Reactivity: | Human, Mouse, Rat |
| Host: | Rabbit |
| Isotype: | IgG |
| Clonality: | Polyclonal |
| Immunogen: | A synthesized peptide derived from human Phospho-B Raf (T401) (Phosphorylated) |
| Formulation: | Rabbit IgG in phosphate buffered saline , pH 7.4, 150mM NaCl, 0.02% sodium azide and 50% glycerol. |
| Concentration: | lot specific |
| Purification: | Affinity Chromatography |
| Conjugation: | Unconjugated |
| Storage: | Store at 4°C short term. Aliquot and store at -20°C long term. Avoid freeze/thaw cycles. |
| Stability: | 1 year |
| Predicted Protein Size: | 85kDa |
| Gene Name: | B-Raf proto-oncogene, serine/threonine kinase |
| Database Link: | Entrez Gene 673 Human P15056 |
| Background: | Swiss-Prot Acc.P15056. Protein kinase involved in the transduction of mitogenic signals from the cell membrane to the nucleus. May play a role in the postsynaptic responses of hippocampal neuron. Phosphorylates MAP2K1, and thereby contributes to the MAP kinase signal transduction pathway. |
| Synonyms: | B-Raf; B-RAF1; BRAF1; FLJ95109; MGC126806; MGC138284; p94; RAFB1 |



[View online »](#)

Product images:



Western blot analysis of Phospho-B Raf (T401) in (1) PC-12 lysates; (2) PC-12 lysates treated with TPA using Phospho-BRAF (Thr401) antibody.