

Product datasheet for **TA383810**

BCL2 Rabbit Polyclonal Antibody

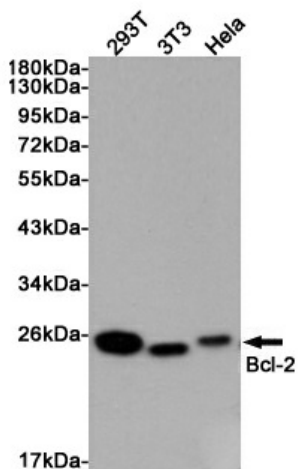
Product data:

| | |
|-------------------------|---|
| Product Type: | Primary Antibodies |
| Applications: | FC, IF, IHC, WB |
| Recommended Dilution: | WB: 1/1000-1/2000 IHC: 1/50-1/200 ICC/IF: 1/50-1/200 FC: 1/50 |
| Reactivity: | Human, Mouse |
| Host: | Rabbit |
| Isotype: | IgG |
| Clonality: | Polyclonal |
| Immunogen: | A synthesized peptide derived from human Bcl-2 |
| Formulation: | Rabbit IgG in phosphate buffered saline , pH 7.4, 150mM NaCl, 0.02% sodium azide and 50% glycerol. |
| Concentration: | lot specific |
| Purification: | Affinity Chromatography |
| Conjugation: | Unconjugated |
| Storage: | Store at 4°C short term. Aliquot and store at -20°C long term. Avoid freeze/thaw cycles. |
| Stability: | 1 year |
| Predicted Protein Size: | 26kDa |
| Gene Name: | B-cell CLL/lymphoma 2 |
| Database Link: | Entrez Gene 596 Human P10415 |
| Background: | Swiss-Prot Acc.P10415.This gene encodes an integral outer mitochondrial membrane protein that blocks the apoptotic death of some cells such as lymphocytes. Constitutive expression of BCL2, such as in the case of translocation of BCL2 to Ig heavy chain locus, is thought to be the cause of follicular lymphoma. Two transcript variants, produced by alternate splicing, differ in their C-terminal ends. |
| Synonyms: | Bcl-2; OTTHUMP00000163680 |

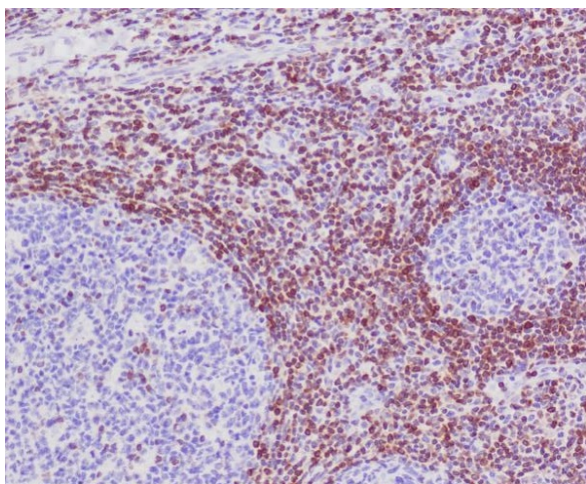


[View online »](#)

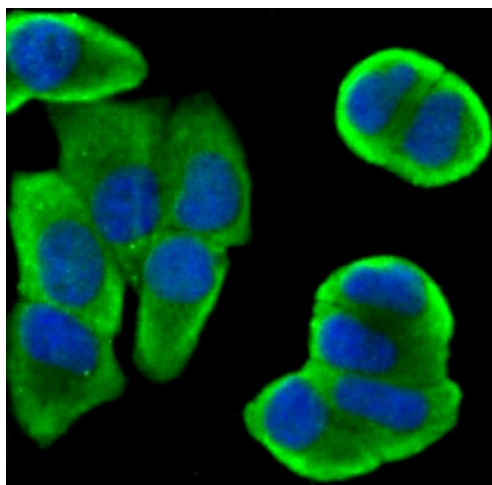
Product images:



Western blot analysis of Bcl2 in 293T, 3T3 and HeLa lysates using Bcl2 antibody.



Immunohistochemical analysis of paraffin-embedded human tonsil, using Bcl-2 Antibody.



Immunocytochemistry staining of MCF-7 cells (green) fixed with paraformaldehyde, permeabilised with .25% Triton X1/PBS, and using Bcl-2 Antibody. The nuclear counter stain is DAPI (blue).