

Product datasheet for **TA382628**

TMPRSS2 Rabbit Polyclonal Antibody

Product data:

Product Type:	Primary Antibodies
Applications:	ICC/IF, IHC, WB
Recommended Dilution:	WB,1:500 - 1:2000 IHC,1:50 - 1:200 IF,1:50 - 1:200
Reactivity:	Human, Mouse, Rat
Modifications:	Unmodified
Host:	Rabbit
Isotype:	IgG
Clonality:	Polyclonal
Immunogen:	Recombinant fusion protein containing a sequence corresponding to amino acids 140-400 of human TMPRSS2 (NP_001128571.1).
Formulation:	Buffer: PBS with 0.02% sodium azide,50% glycerol,pH7.3.
Concentration:	lot specific
Purification:	Affinity purification
Conjugation:	Unconjugated
Storage:	Store at -20°C. Avoid freeze / thaw cycles.
Stability:	Shelf life: one year from despatch.
Predicted Protein Size:	53kDa/57kDa
Gene Name:	transmembrane protease, serine 2
Database Link:	Entrez Gene 7113 Human O15393



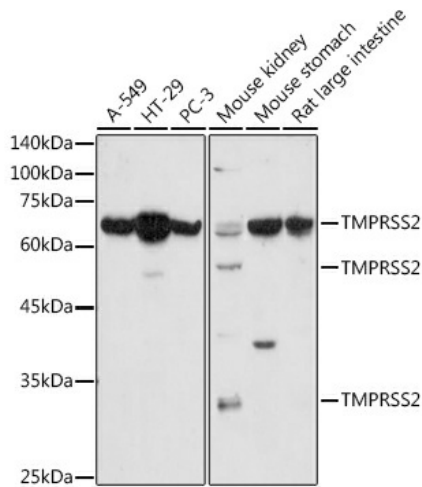
[View online »](#)

Background:

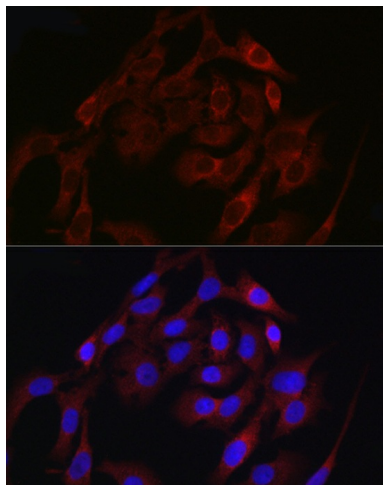
This gene encodes a protein that belongs to the serine protease family. The encoded protein contains a type II transmembrane domain, a receptor class A domain, a scavenger receptor cysteine-rich domain and a protease domain. Serine proteases are known to be involved in many physiological and pathological processes. This gene was demonstrated to be up-regulated by androgenic hormones in prostate cancer cells and down-regulated in androgen-independent prostate cancer tissue. The protease domain of this protein is thought to be cleaved and secreted into cell media after autocleavage. Alternatively spliced transcript variants encoding different isoforms have been found for this gene.

Synonyms:

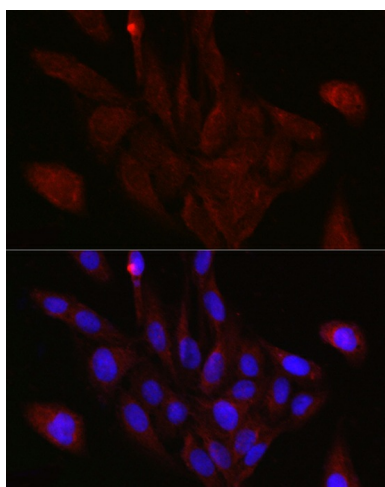
epitheliasin; OTTHUMP00000207917; PP9284; PRSS10

Product images:


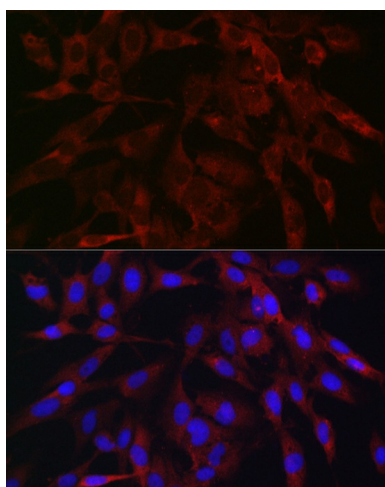
Western blot analysis of extracts of various cell lines, using TMPRSS2 antibody (TA382628) at 1:500 dilution. | Secondary antibody: HRP Goat Anti-Rabbit IgG (H+L) at 1:10000 dilution. | Lysates/proteins: 25ug per lane. | Blocking buffer: 3% nonfat dry milk in TBST. | Detection: ECL Enhanced Kit. | Exposure time: 180s.



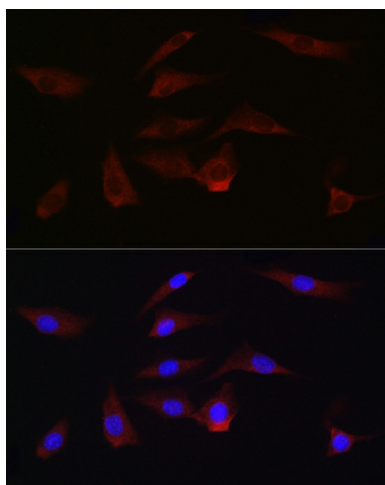
Immunofluorescence analysis of A-549 cells using TMPRSS2 antibody (TA382628) at dilution of 1:50. Blue: DAPI for nuclear staining.



Immunofluorescence analysis of U2OS cells using TMPRSS2 antibody (TA382628) at dilution of 1:50. Blue: DAPI for nuclear staining.



Immunofluorescence analysis of C6 cells using TMPRSS2 antibody (TA382628) at dilution of 1:50. Blue: DAPI for nuclear staining.



Immunofluorescence analysis of NIH/3T3 cells using TMPRSS2 antibody (TA382628) at dilution of 1:50. Blue: DAPI for nuclear staining.