

Product datasheet for **TA378835**

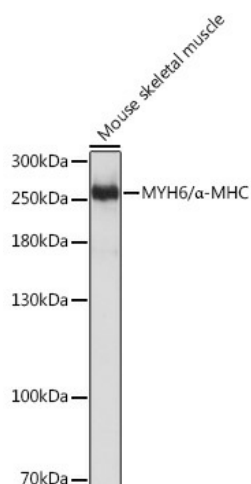
ASD3 (MYH6) Rabbit Polyclonal Antibody

Product data:

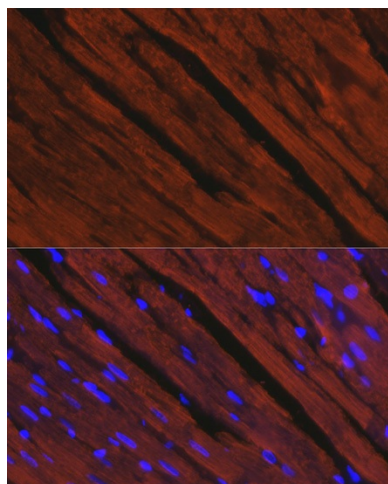
Product Type:	Primary Antibodies
Applications:	ICC/IF, WB
Recommended Dilution:	WB, 1:1000 - 1:2000 IF, 1:50 - 1:200
Reactivity:	Mouse, Rat
Modifications:	Unmodified
Host:	Rabbit
Isotype:	IgG
Clonality:	Polyclonal
Immunogen:	Recombinant fusion protein containing a sequence corresponding to amino acids 1-250 of human MYH6/ α -MHC (NP_002462.2).
Formulation:	Buffer: PBS with 0.02% sodium azide, 50% glycerol, pH 7.3.
Concentration:	lot specific
Purification:	Affinity purification
Conjugation:	Unconjugated
Storage:	Store at -20°C. Avoid freeze / thaw cycles.
Stability:	Shelf life: one year from despatch.
Predicted Protein Size:	223kDa
Gene Name:	myosin, heavy chain 6, cardiac muscle, alpha
Database Link:	P13533
Background:	Cardiac muscle myosin is a hexamer consisting of two heavy chain subunits, two light chain subunits, and two regulatory subunits. This gene encodes the alpha heavy chain subunit of cardiac myosin. The gene is located approximately 4kb downstream of the gene encoding the beta heavy chain subunit of cardiac myosin. Mutations in this gene cause familial hypertrophic cardiomyopathy and atrial septal defect 3.
Synonyms:	alpha-MHC; ASD3; MYHC; MyHC-alpha; MYHCA; OTTHUMP00000164592



[View online »](#)

Product images:

Western blot analysis of extracts of Mouse skeletal muscle, using MYH6/α-MHC Rabbit pAb (TA378835) at 1:3000 dilution. |Secondary antibody: HRP Goat Anti-Rabbit IgG (H+L) at 1:10000 dilution. |Lysates/proteins: 25ug per lane. |Blocking buffer: 3% nonfat dry milk in TBST. |Detection: ECL Basic Kit . |Exposure time: 5s.



Immunofluorescence analysis of rat heart using MYH6/α-MHC antibody (TA378835) at dilution of 1:100. Blue: DAPI for nuclear staining.