

Product datasheet for **TA377380**

IMP3 (IGF2BP3) Rabbit Polyclonal Antibody

Product data:

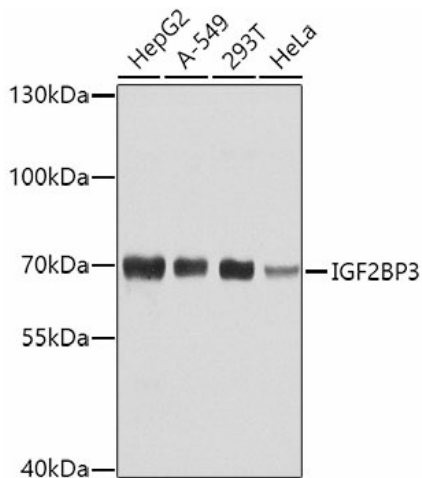
Product Type:	Primary Antibodies
Applications:	ICC/IF, IHC, IP, WB
Recommended Dilution:	WB,1:500 - 1:2000 IHC,1:50 - 1:200 IP,1:20 - 1:50
Reactivity:	Human, Mouse
Modifications:	Unmodified
Host:	Rabbit
Isotype:	IgG
Clonality:	Polyclonal
Immunogen:	Recombinant fusion protein containing a sequence corresponding to amino acids 300-579 of human IGF2BP3 (NP_006538.2).
Formulation:	Buffer: PBS with 0.02% sodium azide,50% glycerol,pH7.3.
Concentration:	lot specific
Purification:	Affinity purification
Conjugation:	Unconjugated
Storage:	Store at -20°C. Avoid freeze / thaw cycles.
Stability:	Shelf life: one year from despatch.
Predicted Protein Size:	21kDa/63kDa
Gene Name:	insulin like growth factor 2 mRNA binding protein 3
Database Link:	Entrez Gene 10643 Human O00425
Background:	The protein encoded by this gene is primarily found in the nucleolus, where it can bind to the 5' UTR of the insulin-like growth factor II leader 3 mRNA and may repress translation of insulin-like growth factor II during late development. The encoded protein contains several KH domains, which are important in RNA binding and are known to be involved in RNA synthesis and metabolism. A pseudogene exists on chromosome 7, and there are putative pseudogenes on other chromosomes.



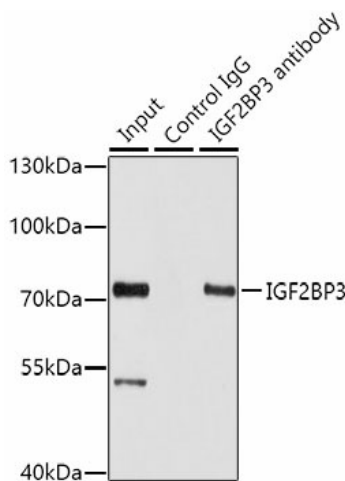
[View online »](#)

Synonyms: CT98; DKFZp686F1078; hKOC; IMP-3; IMP3; KOC1; VICKZ3

Product images:



Western blot analysis of extracts of various cell lines, using IGF2BP3 antibody (TA377380) at 1:1000 dilution. | Secondary antibody: HRP Goat Anti-Rabbit IgG (H+L) at 1:10000 dilution. | Lysates/proteins: 25ug per lane. | Blocking buffer: 3% nonfat dry milk in TBST. | Detection: ECL Basic Kit . | Exposure time: 15s.



Immunoprecipitation analysis of 100ug extracts of HepG2 cells using 3ug IGF2BP3 antibody (TA377380). Western blot was performed from the immunoprecipitate using IGF2BP3 antibody (TA377380) at a dilution of 1:1000.