

## Product datasheet for **TA377052**

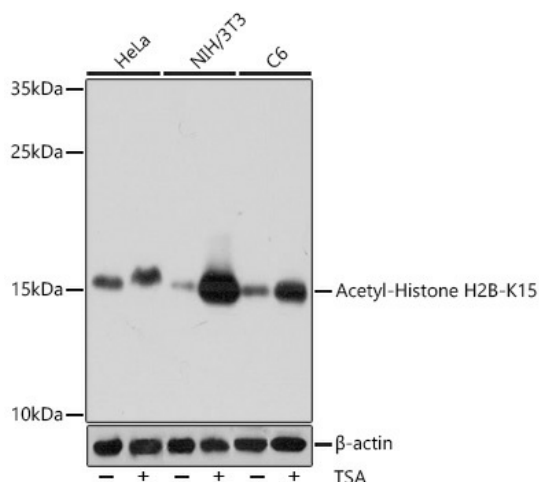
### H2BC5 Rabbit Polyclonal Antibody

#### Product data:

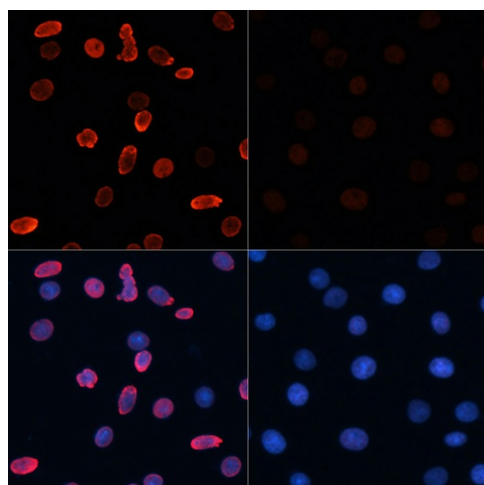
Product Type:	Primary Antibodies
Applications:	ICC/IF, IHC, IP, WB
Recommended Dilution:	WB,1:500 - 1:2000 IHC,1:50 - 1:200 IF,1:50 - 1:100 IP,1:50 - 1:200
Reactivity:	Human, Mouse, Rat, Other (Wide Range)
Modifications:	Acetyl K15
Host:	Rabbit
Isotype:	IgG
Clonality:	Polyclonal
Immunogen:	A synthetic acetylated peptide corresponding to residues surrounding K15 of human Histone H2B
Formulation:	Buffer: PBS with 0.02% sodium azide,50% glycerol,pH7.3.
Concentration:	lot specific
Purification:	Affinity purification
Conjugation:	Unconjugated
Storage:	Store at -20°C. Avoid freeze / thaw cycles.
Stability:	Shelf life: one year from despatch.
Gene Name:	histone cluster 1, H2bd
Database Link:	<a href="#">Entrez Gene 3017 Human P62807</a>
Synonyms:	dj221C16.6; H2B.1B; H2B.b; H2B/b; H2BFB; HIRIP2; MGC90432; OTTHUMP00000016143



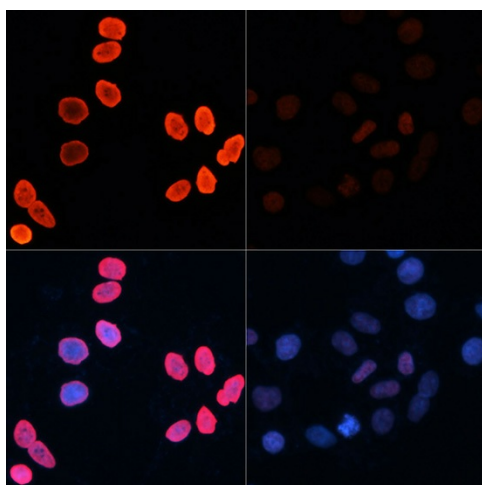
[View online »](#)

**Product images:**


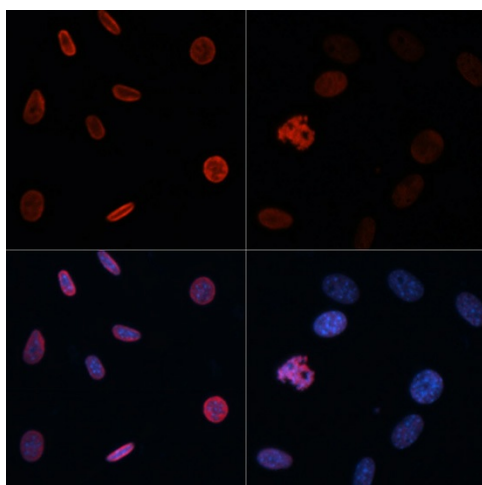
Western blot analysis of extracts of various cell lines, using Acetyl-Histone H2B-K15 antibody (TA377052) at 1:1000 dilution. HeLa cells were treated by TSA (1  $\mu$ M) at 37°C for 18 hours. NIH/3T3 cells were treated by TSA (1  $\mu$ M) at 37°C for 18 hours. C6 cells were treated by TSA (1  $\mu$ M) at 37°C for 18 hours. | Secondary antibody: HRP Goat Anti-Rabbit IgG (H+L) at 1:10000 dilution. | Lysates/proteins: 25  $\mu$ g per lane. | Blocking buffer: 3% BSA. | Detection: ECL Basic Kit. | Exposure time: 10s.



Immunofluorescence analysis of C6 cells using Acetyl-Histone H2B-K15 antibody (TA377052) at dilution of 1:100. C6 cells were treated by TSA (1  $\mu$ M) at 37°C for 18 hours. Blue: DAPI for nuclear staining.



Immunofluorescence analysis of HeLa cells using Acetyl-Histone H2B-K15 antibody (TA377052) at dilution of 1:100. HeLa cells were treated by TSA (1  $\mu$ M) at 37°C for 18 hours. Blue: DAPI for nuclear staining.



Immunofluorescence analysis of NIH/3T3 cells using Acetyl-Histone H2B-K15 antibody (TA377052) at dilution of 1:100. NIH/3T3 cells were treated by TSA (1  $\mu$ M) at 37°C for 18 hours. Blue: DAPI for nuclear staining.