

Product datasheet for **TA376932**

TIM 3 (HAVCR2) Rabbit Polyclonal Antibody

Product data:

Product Type:	Primary Antibodies
Applications:	ICC/IF, WB
Recommended Dilution:	WB,1:500 - 1:2000 IF,1:50 - 1:200
Reactivity:	Human, Mouse
Modifications:	Unmodified
Host:	Rabbit
Isotype:	IgG
Clonality:	Polyclonal
Immunogen:	A synthetic peptide corresponding to a sequence within amino acids 1-100 of human TIM-3/HAVCR2 (NP_116171.3).
Formulation:	Buffer: PBS with 0.02% sodium azide,50% glycerol,pH7.3.
Concentration:	lot specific
Purification:	Affinity purification
Conjugation:	Unconjugated
Storage:	Store at -20°C. Avoid freeze / thaw cycles.
Stability:	Shelf life: one year from despatch.
Predicted Protein Size:	85kDa/100kDa/105kDa/106kDa
Gene Name:	hepatitis A virus cellular receptor 2
Database Link:	Entrez Gene 84868 Human Q8TDQ0



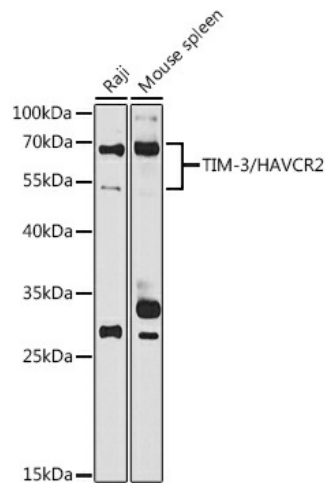
[View online »](#)

Background:

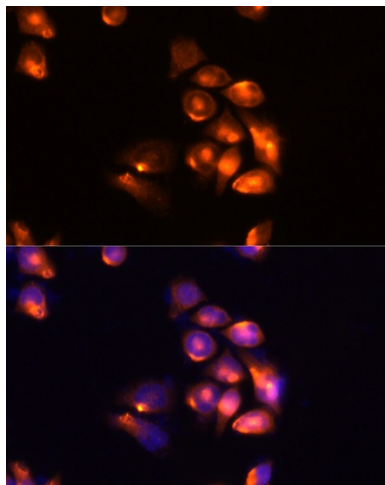
The protein encoded by this gene belongs to the immunoglobulin superfamily, and TIM family of proteins. CD4-positive T helper lymphocytes can be divided into types 1 (Th1) and 2 (Th2) on the basis of their cytokine secretion patterns. Th1 cells are involved in cell-mediated immunity to intracellular pathogens and delayed-type hypersensitivity reactions, whereas, Th2 cells are involved in the control of extracellular helminthic infections and the promotion of atopic and allergic diseases. This protein is a Th1-specific cell surface protein that regulates macrophage activation, and inhibits Th1-mediated auto- and alloimmune responses, and promotes immunological tolerance.

Synonyms:

FLJ14428; HAVcr-2; KIM-3; Tim-3; TIM3; TIMD-3; TIMD3

Product images:


Western blot analysis of extracts of various cell lines, using TIM-3/HAVCR2 antibody (TA376932) at 1:1000 dilution. | Secondary antibody: HRP Goat Anti-Rabbit IgG (H+L) at 1:10000 dilution. | Lysates/proteins: 25ug per lane. | Blocking buffer: 3% nonfat dry milk in TBST. | Detection: ECL Basic Kit. | Exposure time: 60s.



Immunofluorescence analysis of HeLa cells using TIM-3/HAVCR2 antibody (TA376932) at dilution of 1:100 (40x lens). Blue: DAPI for nuclear staining.