

Product datasheet for **TA375827**

EIF4EL3 (EIF4E2) Rabbit Polyclonal Antibody

Product data:

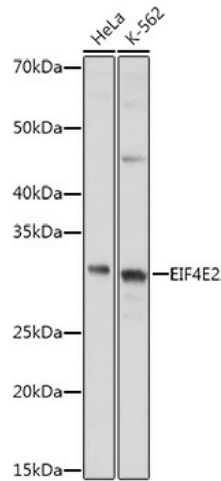
| | |
|-------------------------|---|
| Product Type: | Primary Antibodies |
| Applications: | ICC/IF, IHC, WB |
| Recommended Dilution: | WB,1:200 - 1:2000 IHC,1:50 - 1:200 IF,1:50 - 1:200 |
| Reactivity: | Human, Mouse, Rat |
| Modifications: | Unmodified |
| Host: | Rabbit |
| Isotype: | IgG |
| Clonality: | Polyclonal |
| Immunogen: | Recombinant fusion protein containing a sequence corresponding to amino acids 1-240 of human EIF4E2 (NP_004837.1). |
| Formulation: | Buffer: PBS with 0.02% sodium azide,50% glycerol,pH7.3. |
| Concentration: | lot specific |
| Purification: | Affinity purification |
| Conjugation: | Unconjugated |
| Storage: | Store at -20°C. Avoid freeze / thaw cycles. |
| Stability: | Shelf life: one year from despatch. |
| Predicted Protein Size: | 27kDa/28kDa |
| Gene Name: | eukaryotic translation initiation factor 4E family member 2 |
| Database Link: | Entrez Gene 9470 Human O60573 |
| Background: | Recognizes and binds the 7-methylguanosine-containing mRNA cap during an early step in the initiation. Acts as a repressor of translation initiation. In contrast to EIF4E, it is unable to bind eIF4G (EIF4G1, EIF4G2 or EIF4G3, suggesting that it acts by competing with EIF4E and block assembly of eIF4F at the cap (By similarity. In P-bodies, component of a complex that promotes miRNA-mediated translational repression. |



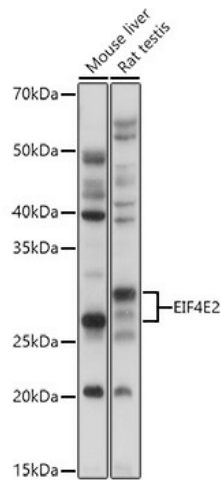
[View online »](#)

Synonyms: 4E-LP; 4EHP; EIF4EL3; IF4e

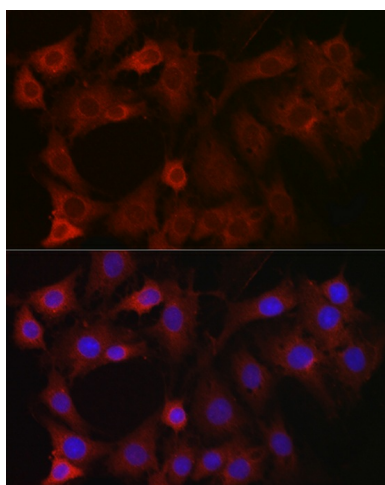
Product images:



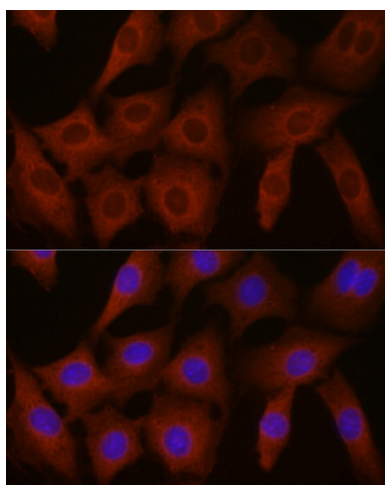
Western blot analysis of extracts of various cell lines, using EIF4E2 antibody (TA375827) at 1:1000 dilution. | Secondary antibody: HRP Goat Anti-Rabbit IgG (H+L) at 1:10000 dilution. | Lysates/proteins: 25ug per lane. | Blocking buffer: 3% nonfat dry milk in TBST. | Detection: ECL Basic Kit . | Exposure time: 2s.



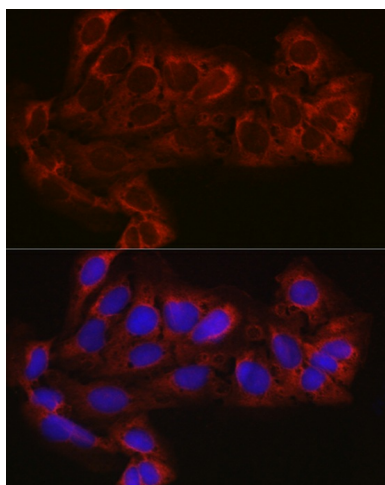
Western blot analysis of extracts of various cell lines, using EIF4E2 antibody (TA375827) at 1:1000 dilution. | Secondary antibody: HRP Goat Anti-Rabbit IgG (H+L) at 1:10000 dilution. | Lysates/proteins: 25ug per lane. | Blocking buffer: 3% nonfat dry milk in TBST. | Detection: ECL Basic Kit . | Exposure time: 5s.



Immunofluorescence analysis of C6 cells using EIF4E2 Rabbit pAb (TA375827) at dilution of 1:100 (40x lens). Blue: DAPI for nuclear staining.



Immunofluorescence analysis of NIH-3T3 cells using EIF4E2 Rabbit pAb (TA375827) at dilution of 1:100 (40x lens). Blue: DAPI for nuclear staining.



Immunofluorescence analysis of U-2 OS cells using EIF4E2 Rabbit pAb (TA375827) at dilution of 1:100 (40x lens). Blue: DAPI for nuclear staining.