

## Product datasheet for **TA373968**

### **BCL2 Rabbit Polyclonal Antibody**

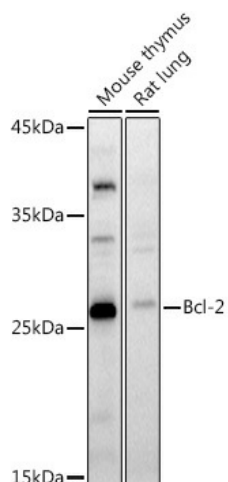
#### **Product data:**

Product Type:	Primary Antibodies
Applications:	ICC/IF, WB
Recommended Dilution:	WB,1:500 - 1:2000 IF,1:50 - 1:200
Reactivity:	Human, Mouse, Rat
Host:	Rabbit
Isotype:	IgG
Clonality:	Polyclonal
Immunogen:	A synthetic peptide corresponding to a sequence within amino acids 1-100 of human Bcl-2 (NP_000624.2).
Formulation:	Buffer: PBS with 0.02% sodium azide,50% glycerol,pH7.3.
Concentration:	lot specific
Purification:	Affinity purification
Conjugation:	Unconjugated
Storage:	Store at -20°C. Avoid freeze / thaw cycles.
Stability:	Shelf life: one year from despatch.
Predicted Protein Size:	22kDa/26kDa
Gene Name:	B-cell CLL/lymphoma 2
Database Link:	<a href="#">Entrez Gene 596 Human P10415</a>
Background:	This gene encodes an integral outer mitochondrial membrane protein that blocks the apoptotic death of some cells such as lymphocytes. Constitutive expression of BCL2, such as in the case of translocation of BCL2 to Ig heavy chain locus, is thought to be the cause of follicular lymphoma. Alternative splicing results in multiple transcript variants.
Synonyms:	Bcl-2; OTTHUMP00000163680

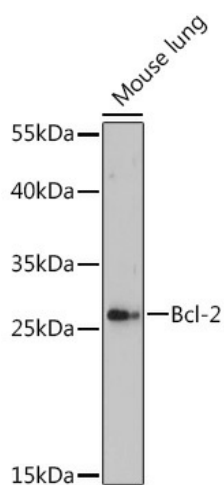


[View online »](#)

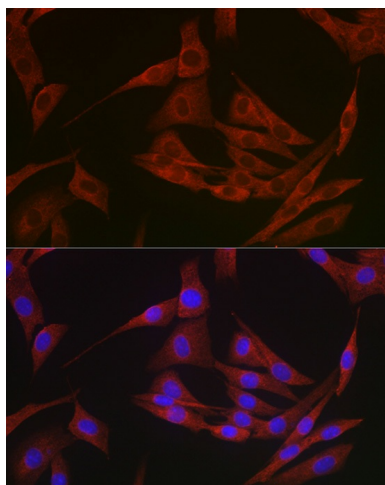
## Product images:



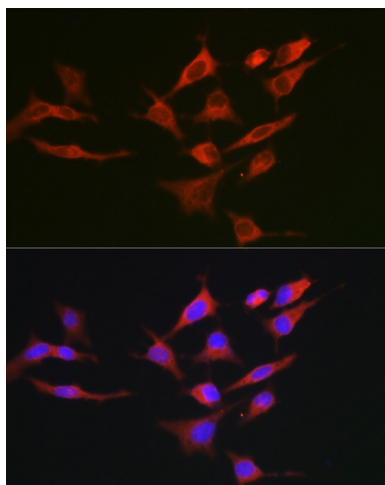
Western blot analysis of extracts of various cell lines, using Bcl-2 antibody (TA373968) at 1:1000 dilution. | Secondary antibody: HRP Goat Anti-Rabbit IgG (H+L) at 1:10000 dilution. | Lysates/proteins: 25ug per lane. | Blocking buffer: 3% nonfat dry milk in TBST. | Detection: ECL Basic Kit . | Exposure time: 180s.



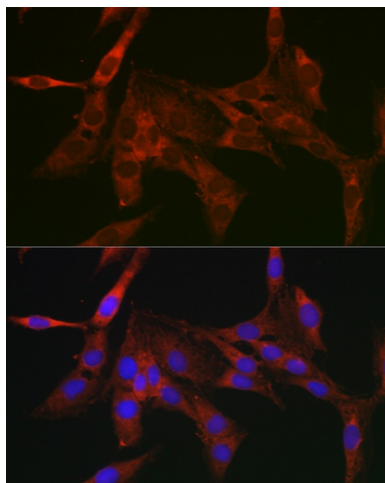
Western blot analysis of extracts of Mouse lung, using Bcl-2 Rabbit pAb (TA373968) at 1:500 dilution. | Secondary antibody: HRP Goat Anti-Rabbit IgG (H+L) at 1:10000 dilution. | Lysates/proteins: 25ug per lane. | Blocking buffer: 3% nonfat dry milk in TBST. | Detection: ECL Enhanced Kit . | Exposure time: 5s.



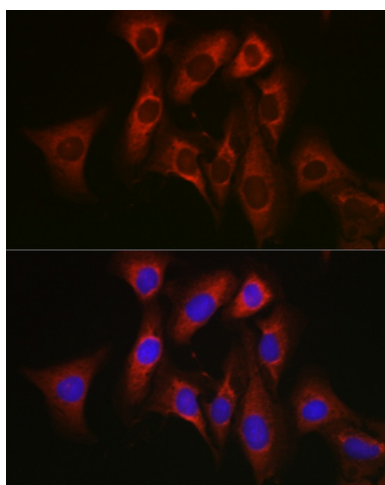
Immunofluorescence analysis of NIH/3T3 cells using Bcl-2 antibody (TA373968) at dilution of 1:250. Blue: DAPI for nuclear staining.



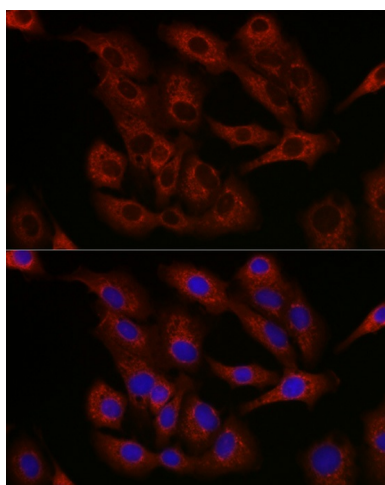
Immunofluorescence analysis of HeLa cells using Bcl-2 antibody (TA373968) at dilution of 1:250. Blue: DAPI for nuclear staining.



Immunofluorescence analysis of C6 cells using Bcl-2 antibody (TA373968) at dilution of 1:250. Blue: DAPI for nuclear staining.



Immunofluorescence analysis of U2OS cells using Bcl-2 antibody (TA373968) at dilution of 1:250. Blue: DAPI for nuclear staining.



Immunofluorescence analysis of A-549 cells using Bcl-2 antibody (TA373968) at dilution of 1:250. Blue: DAPI for nuclear staining.