

## Product datasheet for **TA373810**

### ATP1B2 Rabbit Polyclonal Antibody

#### Product data:

Product Type:	Primary Antibodies
Applications:	ICC/IF, WB
Recommended Dilution:	WB,1:500 - 1:2000 IF,1:50 - 1:200
Reactivity:	Human, Mouse, Rat
Modifications:	Unmodified
Host:	Rabbit
Isotype:	IgG
Clonality:	Polyclonal
Immunogen:	Recombinant fusion protein containing a sequence corresponding to amino acids 68-290 of human ATP1B2 (NP_001669.3).
Formulation:	Buffer: PBS with 0.02% sodium azide,50% glycerol,pH7.3.
Concentration:	lot specific
Purification:	Affinity purification
Conjugation:	Unconjugated
Storage:	Store at -20°C. Avoid freeze / thaw cycles.
Stability:	Shelf life: one year from despatch.
Predicted Protein Size:	33kDa
Gene Name:	ATPase Na <sup>+</sup> /K <sup>+</sup> transporting subunit beta 2
Database Link:	<a href="#">Entrez Gene 482 Human P14415</a>



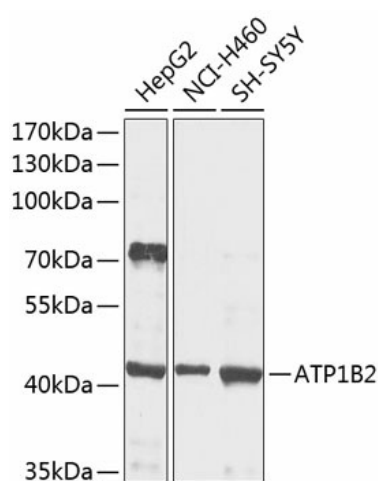
[View online »](#)

**Background:**

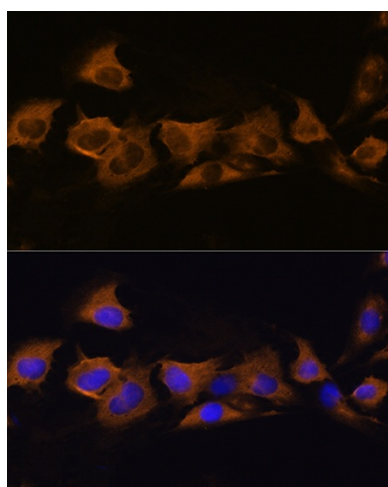
The protein encoded by this gene belongs to the family of Na<sup>+</sup>/K<sup>+</sup> and H<sup>+</sup>/K<sup>+</sup> ATPases beta chain proteins, and to the subfamily of Na<sup>+</sup>/K<sup>+</sup> -ATPases. Na<sup>+</sup>/K<sup>+</sup> -ATPase is an integral membrane protein responsible for establishing and maintaining the electrochemical gradients of Na and K ions across the plasma membrane. These gradients are essential for osmoregulation, for sodium-coupled transport of a variety of organic and inorganic molecules, and for electrical excitability of nerve and muscle. This enzyme is composed of two subunits, a large catalytic subunit (alpha) and a smaller glycoprotein subunit (beta). The beta subunit regulates, through assembly of alpha/beta heterodimers, the number of sodium pumps transported to the plasma membrane. The glycoprotein subunit of Na<sup>+</sup>/K<sup>+</sup> -ATPase is encoded by multiple genes. This gene encodes a beta 2 subunit. Two transcript variants encoding different isoforms have been found for this gene.

**Synonyms:**

AMOG

**Product images:**

Western blot analysis of extracts of various cell lines, using ATP1B2 antibody (TA373810) at 1:1000 dilution. Secondary antibody: HRP Goat Anti-Rabbit IgG (H+L) at 1:10000 dilution. Lysates/proteins: 25ug per lane. Blocking buffer: 3% nonfat dry milk in TBST. Detection: ECL Enhanced Kit. Exposure time: 30s.



Immunofluorescence analysis of C6 cells using ATP1B2 Rabbit pAb (TA373810) at dilution of 1:100. Blue: DAPI for nuclear staining.