

## Product datasheet for **TA372702**

### Guanylin (GUCA2A) Rabbit Polyclonal Antibody

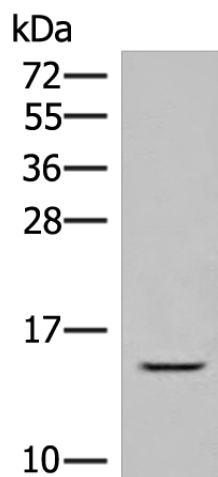
#### Product data:

Product Type:	Primary Antibodies
Applications:	WB
Recommended Dilution:	WB: 200-1000 WB positive control: HT-29 cell lysate
Reactivity:	Human
Host:	Rabbit
Isotype:	IgG
Clonality:	Polyclonal
Immunogen:	Synthetic peptide of human GUCA2A
Formulation:	pH7.4 PBS, 0.05% NaN <sub>3</sub> , 40% Glycerol
Concentration:	lot specific
Purification:	Antigen affinity purification
Conjugation:	Unconjugated
Storage:	Store at -20°C.
Stability:	1 year
Predicted Protein Size:	12 kDa
Gene Name:	guanylate cyclase activator 2A
Database Link:	<a href="#">Entrez Gene 2980 Human Q02747</a>
Background:	Endogenous activator of intestinal guanylate cyclase. It stimulates this enzyme through the same receptor binding region as the heat-stable enterotoxins. Highly expressed in ileum and colon. Found in plasma.
Synonyms:	Gap-I; GUANYLIN; GUCA2; STARA



[View online »](#)

## Product images:



Gel: 12%SDS-PAGE  
Lysate: 40  $\mu$ g  
Lane: HT-29 cell lysate  
Primary antibody: TA372702 (GUCA2A Antibody)  
at dilution 1/450  
Secondary antibody: Goat anti rabbit IgG at  
1/8000 dilution  
Exposure time: 5 minutes