

Product datasheet for **TA369322**

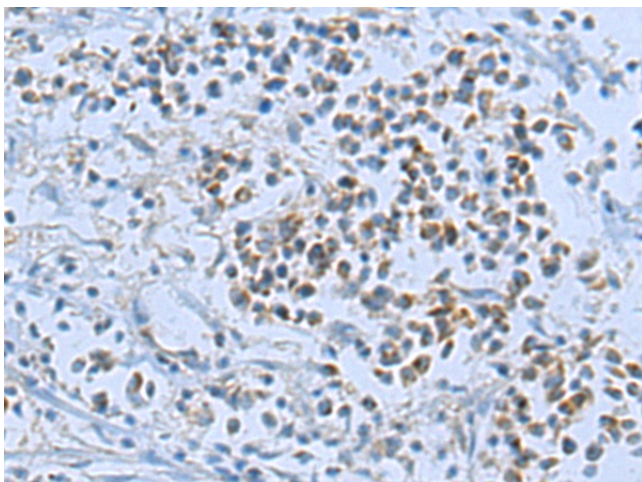
RND3 Rabbit Polyclonal Antibody

Product data:

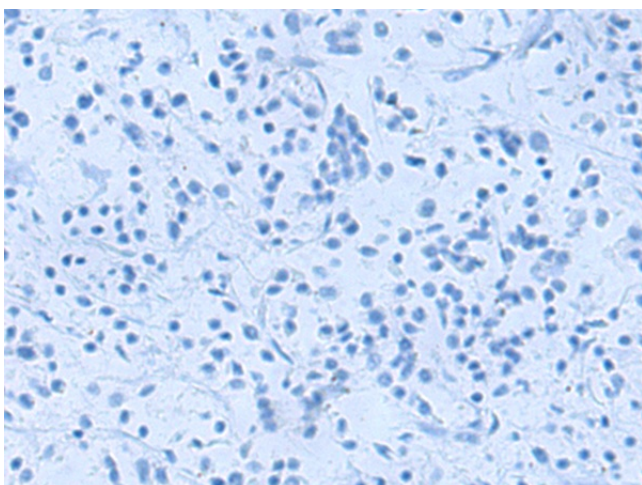
Product Type:	Primary Antibodies
Applications:	IHC
Recommended Dilution:	IHC: 50-100 Positive control: Human breast cancer Predicted cell location: Cytoplasm
Reactivity:	Human, Mouse, Rat
Host:	Rabbit
Isotype:	IgG
Clonality:	Polyclonal
Immunogen:	Fusion protein of human RND3
Formulation:	pH7.4 PBS, 0.05% NaN ₃ , 40% Glycerol
Concentration:	lot specific
Purification:	Antigen affinity purification
Conjugation:	Unconjugated
Storage:	Store at -20°C.
Stability:	1 year
Gene Name:	Rho family GTPase 3
Database Link:	Entrez Gene 390 Human P61587
Background:	This gene encodes a protein which is a member of the small GTPase protein superfamily. The encoded protein binds only GTP but has no GTPase activity, and appears to act as a negative regulator of cytoskeletal organization leading to loss of adhesion. Multiple alternatively spliced variants, encoding the same protein, have been identified.
Synonyms:	ARHE; memB; OTTHUMP00000162685; Rho8; RhoE



[View online »](#)

Product images:

Immunohistochemistry of paraffin-embedded Human breast cancer tissue using TA369322 (RND3 Antibody) at dilution 1/70 (Original magnification: ×200)



Immunohistochemistry of paraffin-embedded Human breast cancer tissue using TA369322 (RND3 Antibody) at dilution 1/70, treated with fusion protein. (Original magnification: ×200)