

## Product datasheet for **TA365772**

### SH3GL2 Rabbit Polyclonal Antibody

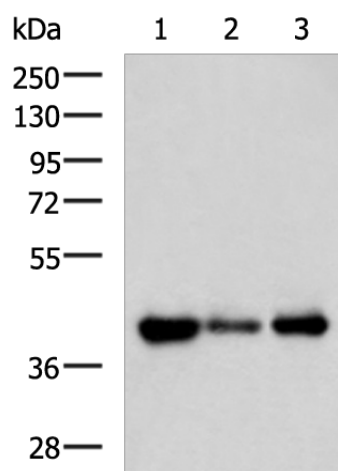
#### Product data:

Product Type:	Primary Antibodies
Applications:	IHC, WB
Recommended Dilution:	WB: 500-2000 WB positive control: Human cerebella tissue, Mouse brain tissue, Human cerebrum tissue lysates IHC: 50-100 Positive control: Human liver cancer Predicted cell location: Cytoplasm
Reactivity:	Human, Mouse, Rat
Host:	Rabbit
Isotype:	IgG
Clonality:	Polyclonal
Immunogen:	Fusion protein of human SH3GL2
Formulation:	pH7.4 PBS, 0.05% NaN <sub>3</sub> , 40% Glycerol
Concentration:	lot specific
Purification:	Antigen affinity purification
Conjugation:	Unconjugated
Storage:	Store at -20°C.
Stability:	1 year
Predicted Protein Size:	40 kDa
Gene Name:	SH3 domain containing GRB2 like 2, endophilin A1
Database Link:	<a href="#">Entrez Gene 6456 Human Q99962</a>
Background:	Implicated in synaptic vesicle endocytosis. May recruit other proteins to membranes with high curvature. Required for BDNF-dependent dendrite outgrowth. Cooperates with SH3GL2 to mediate BDNF-NTRK2 early endocytic trafficking and signaling from early endosomes.
Synonyms:	CNSA2; EEN-B1; Endophilin-1; FLJ20276; FLJ25015; SH3D2A; SH3P4

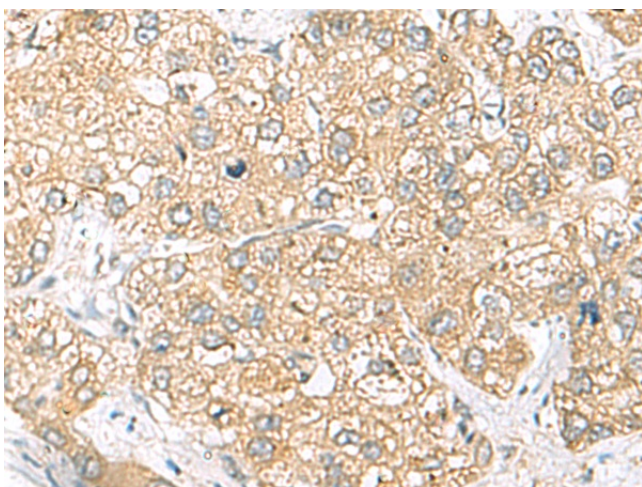


[View online »](#)

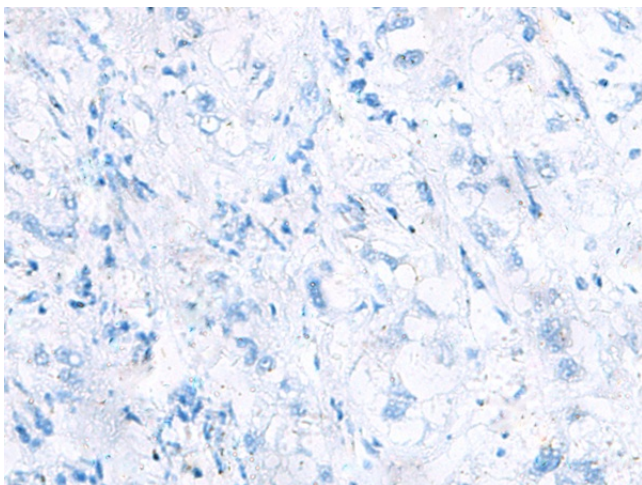
## Product images:



Gel: 8%SDS-PAGE  
Lysate: 40  $\mu$ g  
Lane 1-3: Human cerebella tissue  
Mouse brain tissue  
Human cerebrum tissue lysates  
Primary antibody: TA365772 (SH3GL2 Antibody)  
at dilution 1/500  
Secondary antibody: Goat anti rabbit IgG at  
1/5000 dilution  
Exposure time: 3 seconds



Immunohistochemistry of paraffin-embedded  
Human liver cancer tissue using TA365772  
(SH3GL2 Antibody) at dilution 1/45 (Original  
magnification:  $\times$ 200)



Immunohistochemistry of paraffin-embedded Human liver cancer tissue using TA365772 (SH3GL2 Antibody) at dilution 1/45, treated with fusion protein. (Original magnification:  $\times 200$ )