

## Product datasheet for **TA365154**

### WDR77 Rabbit Polyclonal Antibody

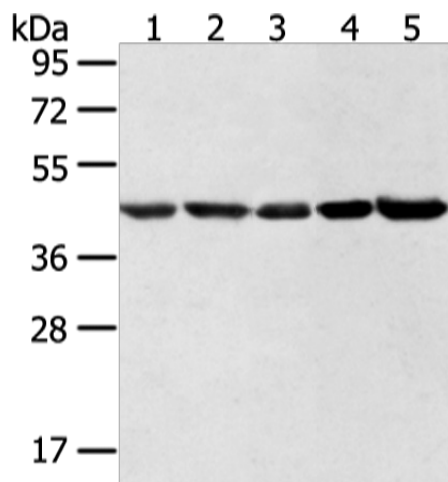
#### Product data:

Product Type:	Primary Antibodies
Applications:	IHC, WB
Recommended Dilution:	WB: 500-2000 WB positive control: Hela, Incap, NIH/3T3, K562 and 231 cell IHC: 25-100 Positive control: Human liver cancer Predicted cell location: Cytoplasm or Nucleus
Reactivity:	Human, Mouse
Host:	Rabbit
Isotype:	IgG
Clonality:	Polyclonal
Immunogen:	Fusion protein of human WDR77
Formulation:	pH7.4 PBS, 0.05% NaN <sub>3</sub> , 40% Glycerol
Concentration:	lot specific
Purification:	Antigen affinity purification
Conjugation:	Unconjugated
Storage:	Store at -20°C.
Stability:	1 year
Predicted Protein Size:	37 kDa
Gene Name:	WD repeat domain 77
Database Link:	<a href="#">Entrez Gene 79084 Human Q9BQA1</a>
Background:	WDR77 is a component of the 20S PRMT5 (MIM 604045)-containing methyltransferase complex, which modifies specific arginines to dimethylarginines in several spliceosomal Sm proteins (see MIM 601061). This modification targets Sm proteins to the survival of motor neurons (SMN) complex (see MIM 600354) for assembly into small nuclear ribonucleoprotein core particles (Friesen et al., 2002 [PubMed 11756452]).
Synonyms:	HKMT1069; MEP-50; MEP50; MGC2722; Nbla10071; p44; p44/Mep50; RP11-552M11.3

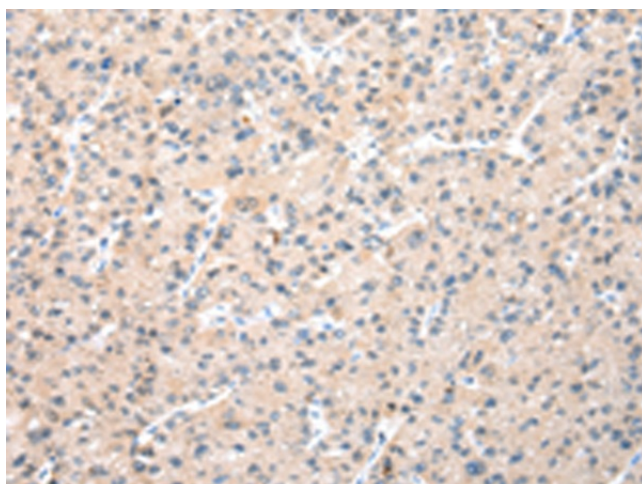


[View online »](#)

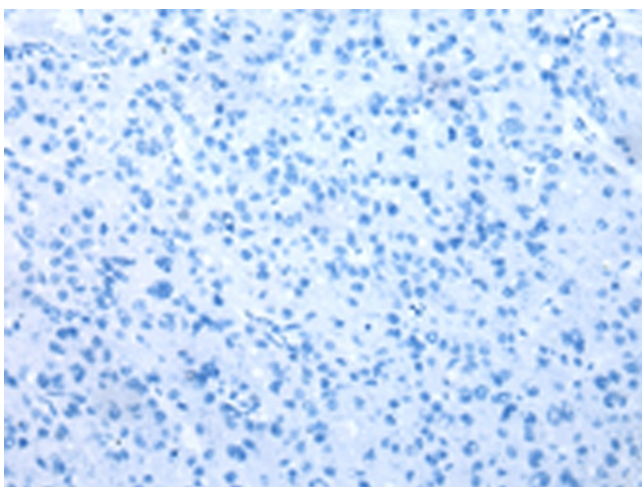
## Product images:



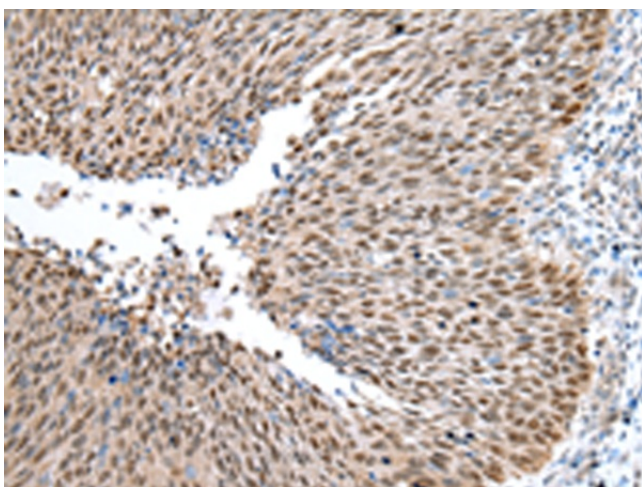
Gel: 8%SDS-PAGE  
Lysate: 40  $\mu$ g  
Lane 1-5: HeLa  
Incap  
NIH/3T3  
K562 and 231 cell  
Primary antibody: TA365154 (WDR77 Antibody) at dilution 1/500  
Secondary antibody: Goat anti rabbit IgG at 1/8000 dilution  
Exposure time: 40 seconds



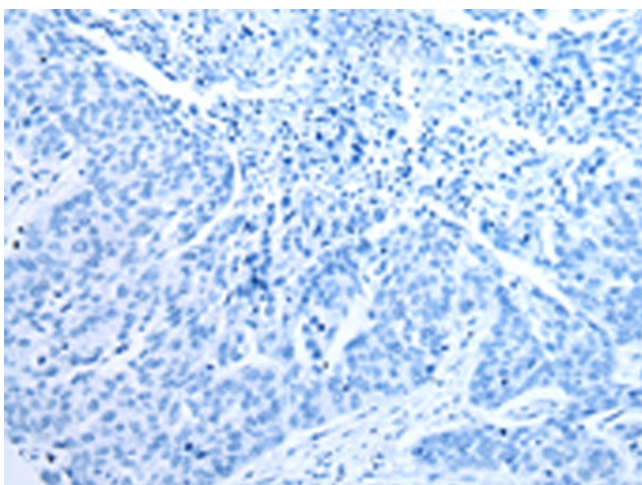
Immunohistochemistry of paraffin-embedded Human liver cancer tissue using TA365154 (WDR77 Antibody) at dilution 1/20 (Original magnification:  $\times$ 200)



Immunohistochemistry of paraffin-embedded Human liver cancer tissue using TA365154 (WDR77 Antibody) at dilution 1/20, treated with fusion protein. (Original magnification: ×200)



Immunohistochemistry of paraffin-embedded Human lung cancer tissue using TA365154 (WDR77 Antibody) at dilution 1/20 (Original magnification: ×200)



Immunohistochemistry of paraffin-embedded Human lung cancer tissue using TA365154 (WDR77 Antibody) at dilution 1/20, treated with fusion protein. (Original magnification: ×200)