

Product datasheet for **TA364235**

Somatostatin (SST) Rabbit Polyclonal Antibody

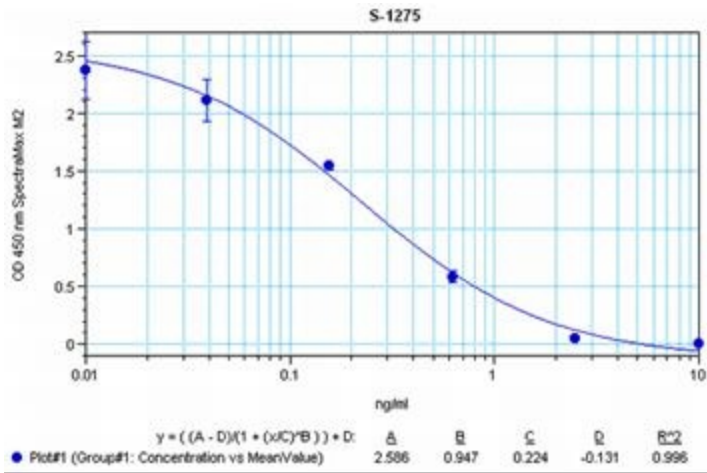
Product data:

Product Type:	Primary Antibodies
Applications:	ELISA
Recommended Dilution:	This antibody has been tested and validated in ELISA against Octreotide. Other applications like immunohistochemistry (IHC), FACS or Western Blot may work as well. Optimal dilutions should be determined by the end user.
Reactivity:	Human, Mammalian
Host:	Rabbit
Clonality:	Polyclonal
Immunogen:	Synthetic peptide H-D-Phe-Cys-Phe-D-Trp-Lys-Thr-Cys-L-threoninol (disulfide bond) coupled to carrier protein.
Formulation:	Neat undiluted antiserum, lyophilized, packaged under nitrogen. Reconstitute by adding 50µl distilled water. This will give the equivalent of undiluted antiserum; does not contain any preservative.
Concentration:	N/A
Conjugation:	Unconjugated
Storage:	Original vial: at least one year at 4° - 8°C from date of delivery. Minimize repeated thawing and freezing of the antiserum by freezing aliquots at -20°C or below.
Gene Name:	somatostatin
Database Link:	Entrez Gene 6750 Human P61278
Background:	Octreotide (brand name Sandostatin, among others) is an octapeptide that mimics natural somatostatin pharmacologically, though it is a more potent inhibitor of growth hormone, glucagon, and insulin than the natural hormone [Wikipedia]. Somatostatin (STT) analogs are important active pharmaceutical ingredients for the treatment of various tumors, and endocrine and digestive diseases. STT is one of the main inhibitors of endocrine and exocrine hormone secretion in humans. This antibody was generated by immunization of rabbits with Octreotide coupled to a carrier protein.
Synonyms:	SMST; somatostatin; somatostatin-14; somatostatin-28



[View online »](#)

Product images:



Typical titration curve of Octreotide in a competitive ELISA with this antibody