

Product datasheet for **TA363807**

ROC1 (RBX1) Rabbit Polyclonal Antibody

Product data:

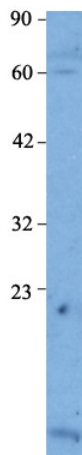
Product Type:	Primary Antibodies
Applications:	WB
Reactivity:	Human
Host:	Rabbit
Clonality:	Polyclonal
Immunogen:	The immunogen is a synthetic peptide directed towards the middle region of human RBX1
Specificity:	Expected reactivity: Cow, Dog, Guinea Pig, Human, Mouse, Rat, Zebrafish Homology: Cow: 100%; Dog: 100%; Guinea Pig: 100%; Human: 100%; Mouse: 100%; Rat: 100%; Zebrafish: 100%
Formulation:	Liquid. Purified antibody supplied in 1x PBS buffer with 0.09% (w/v) sodium azide and 2% sucrose. <i>Note that this product is shipped as lyophilized powder to China customers.</i>
Concentration:	lot specific
Purification:	Protein A purified
Conjugation:	Unconjugated
Storage:	For short term use, store at 2-8°C up to 1 week. For long term storage, store at -20°C in small aliquots to prevent freeze-thaw cycles.
Stability:	Shelf life: one year from despatch.
Predicted Protein Size:	12kDa
Gene Name:	ring-box 1
Database Link:	NP_055063 Entrez Gene 9978 Human P62877
Background:	ROC1 encodes an evolutionarily conserved protein that interacts with cullins. The protein plays a unique role in the ubiquitination reaction by heterodimerizing with cullin-1 to catalyze ubiquitin polymerization. It also may be involved in the regulation of protein turn-over.
Synonyms:	BA554C12.1; MGC1481; MGC13357; RNF75; ROC1
Protein Families:	Druggable Genome



[View online »](#)

Protein Pathways:

Cell cycle, Nucleotide excision repair, Oocyte meiosis, Pathways in cancer, Renal cell carcinoma, TGF-beta signaling pathway, Ubiquitin mediated proteolysis, Wnt signaling pathway

Product images:


Host: Rabbit

Target Name: RBX1

Sample Type: HepG2

Antibody Dilution: 1 ug/ml

Host: Rabbit

Target Name: RBX1

Sample Type: Human HepG2

Antibody Dilution: 1.0 ug/ml