

Product datasheet for **TA363120**

Krt7 Rabbit Polyclonal Antibody

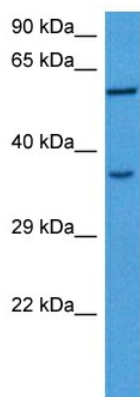
Product data:

Product Type:	Primary Antibodies
Applications:	WB
Reactivity:	Mouse
Host:	Rabbit
Clonality:	Polyclonal
Immunogen:	The immunogen is a synthetic peptide directed towards the middle region of mouse KRT7
Specificity:	Expected reactivity: Mouse
Formulation:	Liquid. Purified antibody supplied in 1x PBS buffer with 0.09% (w/v) sodium azide and 2% sucrose. <i>Note that this product is shipped as lyophilized powder to China customers.</i>
Concentration:	lot specific
Purification:	Affinity purified
Conjugation:	Unconjugated
Storage:	For short term use, store at 2-8°C up to 1 week. For long term storage, store at -20°C in small aliquots to prevent freeze-thaw cycles.
Stability:	Shelf life: one year from despatch.
Predicted Protein Size:	51 kDa
Gene Name:	keratin 7
Database Link:	NP_149064.1 Entrez Gene 110310 Mouse Q9DCV7
Background:	Blocks interferon-dependent interphase and stimulates DNA synthesis in cells.
Synonyms:	CK-7; CK7; Cytokeratin-7; K2C7; K7; Keratin-7; MGC3625; MGC129731; sarcolectin; SCL



[View online »](#)

Product images:



Host: Rabbit
Target Name: Krt7
Sample Type: Mouse Skeletal Muscle Lysate
Antibody Dilution: 1.0 μ g/ml

Host: Rabbit
Target Name: KRT7
Sample Tissue: Mouse Skeletal Muscle lysates
Antibody Dilution: 1 μ g/ml