

## Product datasheet for **TA362874**

### Sod1 Rabbit Polyclonal Antibody

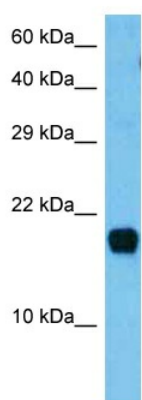
#### Product data:

Product Type:	Primary Antibodies
Applications:	WB
Reactivity:	Rat
Host:	Rabbit
Clonality:	Polyclonal
Immunogen:	The immunogen is a synthetic peptide directed towards the C terminal region of rat SOD1
Specificity:	<b>Expected reactivity:</b> Rat
Formulation:	Liquid. Purified antibody supplied in 1x PBS buffer with 0.09% (w/v) sodium azide and 2% sucrose. <i>Note that this product is shipped as lyophilized powder to China customers.</i>
Concentration:	lot specific
Purification:	Affinity purified
Conjugation:	Unconjugated
Storage:	For short term use, store at 2-8°C up to 1 week. For long term storage, store at -20°C in small aliquots to prevent freeze-thaw cycles.
Stability:	Shelf life: one year from despatch.
Predicted Protein Size:	16 kDa
Gene Name:	superoxide dismutase 1, soluble
Database Link:	<a href="#">NP_058746.1</a> <a href="#">Entrez Gene 24786 Rat P07632</a>
Background:	catalyzes the conversion of superoxide to hydrogen peroxide and molecular oxygen; involved in response to oxidative stress.
Synonyms:	ALS1; homodimer; IPOA; SOD



[View online »](#)

## Product images:



Host: Rabbit  
Target Name: Sod1  
Sample Type: Rat Stomach Lysate  
Antibody Dilution: 1.0 $\mu$ g/ml

Host: Rabbit  
Target Name: SOD1  
Sample Tissue: Rat Stomach lysates  
Antibody Dilution: 1 $\mu$ g/ml