

Product datasheet for **TA362313**

MICAL2 Rabbit Polyclonal Antibody

Product data:

| | |
|-------------------------|---|
| Product Type: | Primary Antibodies |
| Applications: | WB |
| Reactivity: | Human |
| Host: | Rabbit |
| Clonality: | Polyclonal |
| Immunogen: | The immunogen is a synthetic peptide directed towards the N terminal region of human MICAL2 |
| Specificity: | Expected reactivity: Human |
| Formulation: | Liquid. Purified antibody supplied in 1x PBS buffer with 0.09% (w/v) sodium azide and 2% sucrose. <i>Note that this product is shipped as lyophilized powder to China customers.</i> |
| Concentration: | lot specific |
| Purification: | Affinity purified |
| Conjugation: | Unconjugated |
| Storage: | For short term use, store at 2-8°C up to 1 week. For long term storage, store at -20°C in small aliquots to prevent freeze-thaw cycles. |
| Stability: | Shelf life: one year from despatch. |
| Predicted Protein Size: | 107 kDa |
| Gene Name: | microtubule associated monooxygenase, calponin and LIM domain containing 2 |
| Database Link: | NP_001269592.1 Entrez Gene 9645 Human O94851-4 |



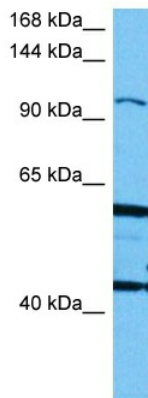
[View online »](#)

Background:

Nuclear monooxygenase that promotes depolymerization of F-actin by mediating oxidation of specific methionine residues on actin and regulates the SRF signaling. Acts by modifying nuclear actin subunits through the addition of oxygen to form methionine-sulfoxide, leading to promote actin filament severing and prevent repolymerization. Acts as a key regulator of the SRF signaling pathway elicited by nerve growth factor and serum: mediates oxidation and subsequent depolymerization of nuclear actin, leading to increase MKL1/MRTF-A presence in the nucleus and promote SRF:MKL1/MRTF-A-dependent gene transcription. Does not activate SRF:MKL1/MRTF-A through RhoA.

Synonyms:

DKFZp686H03148; DKFZp686H2469; KIAA0750; MICAL2PV1; MICAL2PV2

Product images:

Host: Rabbit
Target Name: MICAL2
Sample Type: HepG2 Cell Lysate
Antibody Dilution: 1.0µg/ml

Host: Rabbit
Target Name: MICAL2
Sample Tissue: Human HepG2 Whole Cell lysates
Antibody Dilution: 1ug/ml