

Product datasheet for **TA361376**

PSTPIP1 Rabbit Polyclonal Antibody

Product data:

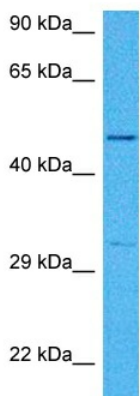
Product Type:	Primary Antibodies
Applications:	WB
Reactivity:	Human
Host:	Rabbit
Clonality:	Polyclonal
Immunogen:	The immunogen is a synthetic peptide directed towards the middle region of human PSTPIP1
Specificity:	Expected reactivity: Human
Formulation:	Liquid. Purified antibody supplied in 1x PBS buffer with 0.09% (w/v) sodium azide and 2% sucrose. <i>Note that this product is shipped as lyophilized powder to China customers.</i>
Concentration:	lot specific
Purification:	Affinity purified
Conjugation:	Unconjugated
Storage:	For short term use, store at 2-8°C up to 1 week. For long term storage, store at -20°C in small aliquots to prevent freeze-thaw cycles.
Stability:	Shelf life: one year from despatch.
Predicted Protein Size:	48 kDa
Gene Name:	proline-serine-threonine phosphatase interacting protein 1
Database Link:	NP_003969.2 Entrez Gene 9051 Human O43586
Background:	The protein encoded by this gene binds to the cytoplasmic tail of CD2, an effector of T cell activation and adhesion, negatively affecting CD2-triggered T cell activation. The encoded protein appears to be a scaffold protein and a regulator of the actin cytoskeleton. It has also been shown to bind ABL1, PTPN18, WAS, CD2AP, and PTPN12. Mutations in this gene are a cause of PAPA syndrome.
Synonyms:	CD2BP1; CD2BP1L; CD2BP1S; H-PIP; PAPAS; PSTPIP
Protein Families:	Druggable Genome



[View online »](#)

Protein Pathways: NOD-like receptor signaling pathway

Product images:



Host: Rabbit
Target Name: PSTPIP1
Sample Type: Hela Cell Lysate
Antibody Dilution: 1.0µg/ml

Host: Rabbit
Target Name: PSTPIP1
Sample Tissue: Human Hela Whole Cell lysates
Antibody Dilution: 1 ug/ml