

Product datasheet for **TA360128**

IFNAR2 Rabbit Polyclonal Antibody

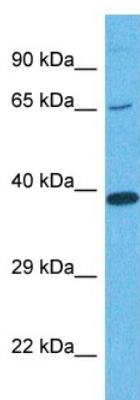
Product data:

Product Type:	Primary Antibodies
Applications:	WB
Reactivity:	Human
Host:	Rabbit
Clonality:	Polyclonal
Immunogen:	The immunogen for Anti-IFNAR2 antibody is: synthetic peptide directed towards the C-terminal region of Human INAR2
Specificity:	Expected reactivity: Human
Formulation:	Liquid. Purified antibody supplied in 1x PBS buffer with 0.09% (w/v) sodium azide and 2% sucrose. <i>Note that this product is shipped as lyophilized powder to China customers.</i>
Concentration:	lot specific
Purification:	Affinity purified
Conjugation:	Unconjugated
Storage:	For short term use, store at 2-8°C up to 1 week. For long term storage, store at -20°C in small aliquots to prevent freeze-thaw cycles.
Stability:	Shelf life: one year from despatch.
Predicted Protein Size:	56 kDa
Gene Name:	interferon alpha and beta receptor subunit 2
Database Link:	NP_997468.1 Entrez Gene 3455 Human P48551
Background:	The protein encoded by this gene is a type I membrane protein that forms one of the two chains of a receptor for interferons alpha and beta. Binding and activation of the receptor stimulates Janus protein kinases, which in turn phosphorylate several proteins, including STAT1 and STAT2. Multiple transcript variants encoding at least two different isoforms have been found for this gene.
Synonyms:	IFN-alpha-REC; IFN-R; IFNARB; OTTHUMP00000067674



[View online »](#)

Product images:



Host: Rabbit
Target Name: INAR2
Sample Tissue: Fetal Lung Lysate
Antibody Dilution: 1.0 μ g/ml

WB Suggested Anti-INAR2 antibody Titration: 1
ug/mL
Sample Type: Human Fetal Lung