

## Product datasheet for **TA358478**

### RPS2 Rabbit Polyclonal Antibody

#### Product data:

Product Type:	Primary Antibodies
Applications:	WB
Reactivity:	Human
Host:	Rabbit
Clonality:	Polyclonal
Specificity:	<b>Expected reactivity:</b> Dog, Pig, Rat, Yeast, Zebrafish <b>Homology:</b> Dog: 100%; Pig: 100%; Rat: 100%; Yeast: 100%; Zebrafish: 100%
Formulation:	Liquid. Purified antibody supplied in 1x PBS buffer with 0.09% (w/v) sodium azide and 2% sucrose. <i>Note that this product is shipped as lyophilized powder to China customers.</i>
Concentration:	lot specific
Purification:	Affinity Purified
Conjugation:	Unconjugated
Storage:	For short term use, store at 2-8°C up to 1 week. For long term storage, store at -20°C in small aliquots to prevent freeze-thaw cycles.
Stability:	Shelf life: one year from despatch.
Predicted Protein Size:	32kDa
Gene Name:	ribosomal protein S2
Database Link:	<a href="#">NP_002943</a> <a href="#">Entrez Gene 6187 Human P15880</a>
Background:	Ribosomes, the organelles that catalyze protein synthesis, consist of a small 40S subunit and a large 60S subunit. Together these subunits are composed of 4 RNA species and approximately 80 structurally distinct proteins. This gene encodes a ribosomal protein that is a component of the 40S subunit. The protein belongs to the S5P family of ribosomal proteins. It is located in the cytoplasm. This gene shares sequence similarity with mouse LLRep3. It is co-transcribed with the small nucleolar RNA gene U64, which is located in its third intron. As is typical for genes encoding ribosomal proteins, there are multiple processed pseudogenes of this gene dispersed through the genome.

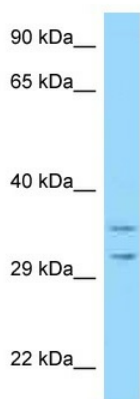


[View online >](#)

Synonyms: LLREP3; MGC102851; MGC117344; MGC117345; OK/KNS-cl.6; RPS4; S4

Protein Pathways: Ribosome

### Product images:



WB Suggested Anti-RPS2 Antibody

Titration: 1.0 ug/ml

Positive Control: Hela Whole Cell RPS2 is strongly supported by BioGPS gene expression data to be expressed in Human HeLa cells